

Anti-KIF2A antibody (30-220) (STJ118820)

GENERAL INFORMATION

Product Type	Primary antibodies
Applications	WB/ELISA
Host / Source	Rabbit
Reactivity	Human/Mouse/Rat

PRODUCT PROPERTIES

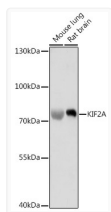
Clonality	Polyclonal
Concentration	Lot specific
Conjugation	Unconjugated
Purification	Affinity purification
Dilution Range	WB:1:500-1:1000 ELISA:Recommended starting concentration is 1 Mu g/mL. Please optimize the concentration based on your specific assay requirements.
Formulation	PBS with 0.01% Thimerosal, 50% Glycerol, pH 7.3.
Isotype	IgG
Molecular Weight	Protein Mw: 80kDa Observed Mw: 80kDa
Storage Instruction	Store at -20°C for up to 1 year from the date of receipt, and avoid repeat freeze-thaw cycles.

TARGET INFORMATION

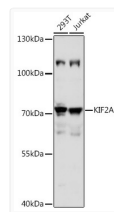
Gene ID	3796
Gene Symbol	KIF2A
UniProt ID	KIF2A_HUMAN
Immunogen Region	30-220
Immunogen Sequence	TSLNEDNESVTVEWIENGDT KGKEIDLESIFSLNPDLPD EEIEPSPETPPPPASSAKVN KIVKNRRTVASIKNDPPSRD NRVVGSARARPSQFPEQSSS AQQNGSVSDISPVQAAKKEF GPPSRRKSNVCVKEVKLQEK REKRRLQQQLREKRAQDVD ATNPNYEIMCMIRDFRGLD YRPLTTADPID
Specificity	Recombinant fusion protein containing a sequence corresponding to amino acids 30-220 of human KIF2A (NP_004511.2).

ADDITIONAL INFORMATION

Note STRICTLY FOR FURTHER SCIENTIFIC RESEARCH USE ONLY (RUO). MUST NOT TO BE USED IN DIAGNOSTIC OR THERAPEUTIC APPLICATIONS.



Western blot analysis of various lysates using KIF2A Rabbit polyclonal antibody (STJ118820) at 1:1000 dilution. Secondary antibody: HRP Goat Anti-Rabbit IgG (H+L) (STJS000856) at 1:10000 dilution. Lysates/proteins: 25 Mu g per lane. Blocking buffer: 3% nonfat dry milk in TBST. Detection: ECL Basic Kit. Exposure time: 10s.



Western blot analysis of various lysates using KIF2A Rabbit polyclonal antibody (STJ118820) at 1:1000 dilution. Secondary antibody: HRP Goat Anti-Rabbit IgG (H+L) (STJS000856) at 1:10000 dilution. Lysates/proteins: 25 Mu g per lane. Blocking buffer: 3% nonfat dry milk in TBST. Detection: ECL Basic Kit. Exposure time: 5s.