

Anti-MSH6 antibody (1-290) (STJ118809)

GENERAL INFORMATION

Product Type	Primary antibodies
Applications	WB/IHC-P/IF/ICC/ELISA
Host / Source	Rabbit
Reactivity	Human/Mouse/Rat

PRODUCT PROPERTIES

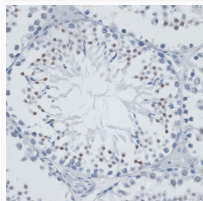
Clonality	Polyclonal
Concentration	Lot specific
Conjugation	Unconjugated
Purification	Affinity purification
Dilution Range	WB:1:500-1:2000 IHC-P:1:50-1:200 IF/ICC:1:50-1:200 ELISA:Recommended starting concentration is 1 µg/mL. Please optimize the concentration based on your specific assay requirements.
Formulation	PBS with 0.02% Sodium Azide, 50% Glycerol, pH 7.3.
Isotype	IgG
Molecular Weight	Protein Mw: 153kDa Observed Mw: Refer to figures
Storage Instruction	Store at -20°C for up to 1 year from the date of receipt, and avoid repeat freeze-thaw cycles.

TARGET INFORMATION

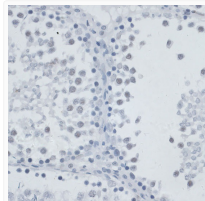
Gene ID	2956
Gene Symbol	MSH6
UniProt ID	MSH6_HUMAN
Immunogen Region	1-290
Immunogen Sequence	MSRQSTLYSFFPKSPALSDA NKASARASREGGAAAAAPGA SPSPGGDAWSEAGGPRPL ARSASPPKAKNLNGLRRSV APAAPTSCDFSPGDLVWAKM EGYPPWWPCLVYNHPFDGTFI REK GKSVRVHVQFFDDSPTR GWVSKRLLKPYTGSKSKEAQ KGGHFYSAKPEILRAMQRAD EALNKDKIKRLELAVCDEPS EPEEEEEMEVGTTYVTDKSE EDNEIESEEEVQPKTQGSR
Specificity	Recombinant fusion protein containing a sequence corresponding to amino acids 1-290 of human MSH6 (NP_000170.1).

ADDITIONAL INFORMATION

Note STRICTLY FOR FURTHER SCIENTIFIC RESEARCH USE ONLY (RUO). MUST NOT TO BE USED IN DIAGNOSTIC OR THERAPEUTIC APPLICATIONS.



Immunohistochemistry analysis of paraffin-embedded mouse testis using MSH6 antibody (STJ118809) at dilution of 1:100 (40x lens). Perform microwave antigen retrieval with 10 mM PBS buffer pH 7.2 before commencing with immunohistochemistry staining protocol.



Immunohistochemistry analysis of paraffin-embedded rat testis using MSH6 antibody (STJ118809) at dilution of 1:100 (40x lens). Perform microwave antigen retrieval with 10 mM PBS buffer pH 7.2 before commencing with immunohistochemistry staining protocol.