

## Anti-BMP1 antibody (725-986) (STJ118781)

### GENERAL INFORMATION

Product Type	Primary antibodies
Applications	IF/ICC/ELISA
Host / Source	Rabbit
Reactivity	Human

### PRODUCT PROPERTIES

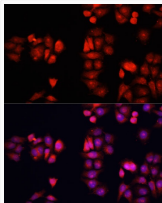
Clonality	Polyclonal
Concentration	Lot specific
Conjugation	Unconjugated
Purification	Affinity purification
Dilution Range	IF/ICC:1:50-1:200 ELISA:Recommended starting concentration is 1 µg/mL. Please optimize the concentration based on your specific assay requirements.
Formulation	PBS with 0.01% Thimerosal, 50% Glycerol, pH 7.3.
Isotype	IgG
Molecular Weight	Protein Mw: 111kDa Observed Mw:
Storage Instruction	Store at -20°C for up to 1 year from the date of receipt, and avoid repeat freeze-thaw cycles.

### TARGET INFORMATION

Gene ID	<a href="#">649</a>
Gene Symbol	<a href="#">BMP1</a>
UniProt ID	<a href="#">BMP1_HUMAN</a>
Immunogen Region	725-986
Immunogen Sequence	YECQCRSGFVLHDNKHDCKE AGCDHKVTSTSGTITSPNWP DKYPSKKECTWASISSTPGHR VKLTFMEMDIESQPECAVDH LEVFDGRDAKAPVLGRFCGS KKPEPVLATGSRMFLRFYSD NSVQRKGFQASHATECGGQV RADVKTKDLYSHAQFGDNNY PGGVDCEWVIVAEEGYGVEL VFQTFEVEEETDCGYDYMEL FDGYDSTAPRLGRYCGSGPP EEVYSAGDSVLVKFHSDDT
Specificity	Recombinant fusion protein containing a sequence corresponding to amino acids 725-986 of human BMP1 (NP_006120.1).

### ADDITIONAL INFORMATION

Note	STRICTLY FOR FURTHER SCIENTIFIC RESEARCH USE ONLY (RUO). MUST NOT TO BE USED IN DIAGNOSTIC OR THERAPEUTIC APPLICATIONS.
------	---



Immunofluorescence analysis of HeLa cells using BMP1 Rabbit polyclonal antibody (STJ118781) at dilution of 1:100. Secondary antibody: Cy3 Goat Anti-Rabbit IgG (H+L) at 1:500 dilution. Blue: DAPI for nuclear staining.