

Anti-ARAF antibody (371-606) (STJ118774)

GENERAL INFORMATION

Product Type	Primary antibodies
Applications	WB/IF/ICC/ELISA
Host / Source	Rabbit
Reactivity	Human/Mouse/Rat

PRODUCT PROPERTIES

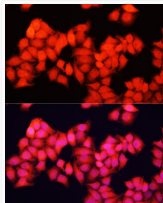
Clonality	Polyclonal
Concentration	Lot specific
Conjugation	Unconjugated
Purification	Affinity purification
Dilution Range	WB:1:500-1:2000 IF/CC:1:50-1:200 ELISA:Recommended starting concentration is 1 Mu g/mL. Please optimize the concentration based on your specific assay requirements.
Formulation	PBS with 0.02% Sodium Azide, 50% Glycerol, pH 7.3.
Isotype	IgG
Molecular Weight	Protein Mw: 68kDa Observed Mw: Refer to figures
Storage Instruction	Store at -20°C for up to 1 year from the date of receipt, and avoid repeat freeze-thaw cycles.

TARGET INFORMATION

Gene ID	369
Gene Symbol	ARAF
UniProt ID	ARAF_HUMAN
Immunogen Region	371-606
Immunogen Sequence	GFMTRPGFAITQWCEGSSL YHHLHVADTRFDMVQLIDVA RQTAQGMDYLHAKNIIHRDL KSNINFLHEGLTVKIGDFGL ATKTRWSGAQPLEQPSGSV LWMAAEVIRMQDPNPYSFQS DVYAYGVVLYELMTGSLPYS HIGCRDQIIFMVGRGYLSPD LSKISSNCPKAMRRLSDCL KFQREERPLFPQILATIELL QRSLPKIERSASEPSLHRTQ ADELPACLLSAARLVP
Specificity	Recombinant fusion protein containing a sequence corresponding to amino acids 371-606 of human ARAF (NP_001645.1).

ADDITIONAL INFORMATION

Note STRICTLY FOR FURTHER SCIENTIFIC RESEARCH USE ONLY (RUO). MUST NOT TO BE USED IN DIAGNOSTIC OR THERAPEUTIC APPLICATIONS.



Immunofluorescence analysis of HeLa cells using ARAF antibody (STJ118774) at dilution of 1:100. Blue: DAPI for nuclear staining.