

Anti-A2M antibody (1155-1474) (STJ118764)

GENERAL INFORMATION

Product Type	Primary antibodies
Applications	WB/IHC-P/ELISA
Host / Source	Rabbit
Reactivity	Human

PRODUCT PROPERTIES

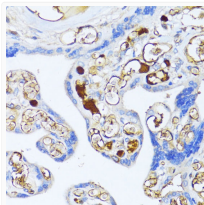
Clonality	Polyclonal
Concentration	Lot specific
Conjugation	Unconjugated
Purification	Affinity purification
Dilution Range	WB:1:500-1:2000 IHC-P:1:50-1:200 ELISA:Recommended starting concentration is 1 µg/mL. Please optimize the concentration based on your specific assay requirements.
Formulation	PBS with 0.01% Thimerosal, 50% Glycerol, pH 7.3.
Isotype	IgG
Molecular Weight	Protein Mw: 163kDa Observed Mw: Refer to figures
Storage Instruction	Store at -20°C for up to 1 year from the date of receipt, and avoid repeat freeze-thaw cycles.

TARGET INFORMATION

Gene ID	2
Gene Symbol	A2M
UniProt ID	A2MG_HUMAN
Immunogen Region	1155-1474
Immunogen Sequence	ALAGNQDKRKEVLKSLNEEA VKKDNSVHWERPQKPKAPVG HFYEPQAPSAEEMTSYVLL AYLTAQPAPTSEDLT SATNI VKWITKQQNAQGGFSSTQDT VVALHALSKYGAATFTRTGK AAQVTIQSSGTFSSKFQVDN NNRLLQVSLPELPGEYSM KVTGEGCVYVLTSLKYNILP EKEEFPFALGVQTLPTQTCDE PKAHTSFQISLSVSYTGSRAS ASNMAIVDKMVSGFIPLK
Specificity	Recombinant fusion protein containing a sequence corresponding to amino acids 1155-1474 of human Alpha-2-Macroglobulin (Alpha-2-Macroglobulin (A2M)) (NP_000005.2).

ADDITIONAL INFORMATION

Note	STRICTLY FOR FURTHER SCIENTIFIC RESEARCH USE ONLY (RUO). MUST NOT TO BE USED IN DIAGNOSTIC OR THERAPEUTIC APPLICATIONS.
------	---



Immunohistochemistry analysis of Alpha-2-Macroglobulin (A2M) in paraffin-embedded human placenta using Alpha-2-Macroglobulin (A2M) Rabbit polyclonal antibody (STJ118764) at dilution of 1:100 (40x lens). Perform microwave antigen retrieval with 10 mM PBS buffer pH 7.2 before commencing with immunohistochemistry staining protocol.