

Anti-ADRB1 antibody (150-250) (STJ118762)

GENERAL INFORMATION

| | |
|---------------|--------------------|
| Product Type | Primary antibodies |
| Applications | WB/IF/ICC/ELISA |
| Host / Source | Rabbit |
| Reactivity | Mouse/Rat |

PRODUCT PROPERTIES

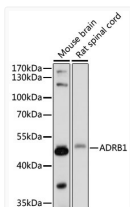
| | |
|---------------------|---|
| Clonality | Polyclonal |
| Concentration | Lot specific |
| Conjugation | Unconjugated |
| Purification | Affinity purification |
| Dilution Range | WB:1:500-1:2000 IF/CC:1:50-1:200 ELISA:Recommended starting concentration is 1 μ g/mL. Please optimize the concentration based on your specific assay requirements. |
| Formulation | PBS with 0.01% Thimerosal, 50% Glycerol, pH 7.3. |
| Isotype | IgG |
| Molecular Weight | Protein Mw: 51kDa Observed Mw: 51kDa |
| Storage Instruction | Store at -20°C for up to 1 year from the date of receipt, and avoid repeat freeze-thaw cycles. |

TARGET INFORMATION

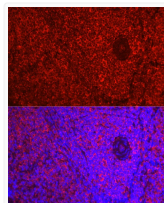
| | |
|--------------------|--|
| Gene ID | 153 |
| Gene Symbol | ADRB1 |
| UniProt ID | ADRB1_HUMAN |
| Immunogen Region | 150-250 |
| Immunogen Sequence | CVIALDRYLAIITSPFRYQSL LTRARARGLVCTVWAIASLV SFLPILMHWWRAESDEARRC YNDPKCCDFVTNRAYAIASS VVSFYVPLCIMAFVYLRVFR E |
| Specificity | A synthetic peptide corresponding to a sequence within amino acids 150-250 of human ADRB1 (NP_000675.1). |

ADDITIONAL INFORMATION

Note STRICTLY FOR FURTHER SCIENTIFIC RESEARCH USE ONLY (RUO). MUST NOT TO BE USED IN DIAGNOSTIC OR THERAPEUTIC APPLICATIONS.



Western blot analysis of extracts of various cell lines, using ADRB1 antibody (STJ118762) at 1:1000 dilution. Secondary antibody: HRP Goat Anti-rabbit IgG (H+L) (STJS000856) at 1:10000 dilution. Lysates/proteins: 25 μ g per lane. Blocking buffer: 3% non-fat dry milk in TBST. Detection: ECL Basic Kit. Exposure time: 1s.



Immunofluorescence analysis of Rat spleen using ADRB1 antibody (STJ118762) at dilution of 1:50 (40x lens). Blue: DAPI for nuclear staining.