

Anti-FUNDC1 antibody (1-155) (STJ118748)

GENERAL INFORMATION

Product Type	Primary antibodies
Applications	WB/IHC-P/ELISA
Host / Source	Rabbit
Reactivity	Human/Mouse

PRODUCT PROPERTIES

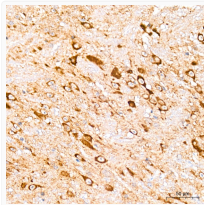
Clonality	Polyclonal
Concentration	Lot specific
Conjugation	Unconjugated
Purification	Affinity purification
Dilution Range	WB:1:500-1:1000 IHC-P:1:50-1:200 ELISA:Recommended starting concentration is 1 Mu g/mL. Please optimize the concentration based on your specific assay requirements.
Formulation	PBS with 0.05% Proclin300, 50% Glycerol, pH 7.3.
Isotype	IgG
Molecular Weight	Protein Mw: 17kDa Observed Mw: 17kDa
Storage Instruction	Store at -20°C for up to 1 year from the date of receipt, and avoid repeat freeze-thaw cycles.

TARGET INFORMATION

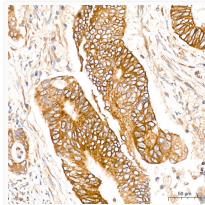
Gene ID	139341
Gene Symbol	FUNDC1
UniProt ID	FUND1_HUMAN
Immunogen Region	1-155
Immunogen Sequence	MATRNPQQDYESDDDSYEV LDLTEYARRHQWNRVFGHS SGPMVEKYSVATQIVMGGVT GWCAGFLFQKVGKLAATAVGGFLLLIASHSGYVQIDWK RVEKDVNKAQRQIKRANKA APEINNLIEEATEFIKQIV ISSGFVGGFLLGLAS
Specificity	A synthetic peptide corresponding to a sequence within amino acids 1-155 of human FUNDC1 (NP_776155.1).

ADDITIONAL INFORMATION

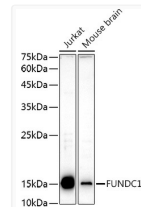
Note STRICTLY FOR FURTHER SCIENTIFIC RESEARCH USE ONLY (RUO). MUST NOT TO BE USED IN DIAGNOSTIC OR THERAPEUTIC APPLICATIONS.



Immunohistochemistry analysis of FUNDC1 in paraffin-embedded mouse brain tissue using FUNDC1 Rabbit polyclonal antibody (STJ118748) at a dilution of 1:100 (40x lens). High pressure antigen retrieval was performed with 0.01 M citrate buffer (pH 6.0) prior to immunohistochemistry staining.



Immunohistochemistry analysis of FUNDC1 in paraffin-embedded human colon carcinoma tissue using FUNDC1 Rabbit polyclonal antibody (STJ118748) at a dilution of 1:100 (40x lens). High pressure antigen retrieval was performed with 0.01 M citrate buffer (pH 6.0) prior to immunohistochemistry staining.



Western blot analysis of various lysates using FUNDC1 Rabbit polyclonal antibody (STJ118748) at 1:1000 dilution. Secondary antibody: HRP Goat Anti-Rabbit IgG (H+L) (STJS000856) at 1:10000 dilution. Lysates/proteins: 25 Mu g per lane. Blocking buffer: 3% nonfat dry milk in TBST. Detection: ECL Enhanced Kit. Exposure time: 180s.