

Anti-WT1 antibody (1-302) (STJ118729)

GENERAL INFORMATION

Product Type	Primary antibodies
Applications	WB/IF/ICC/ELISA
Host / Source	Rabbit
Reactivity	Human/Mouse/Rat

PRODUCT PROPERTIES

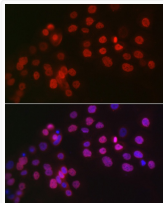
Clonality	Polyclonal
Concentration	Lot specific
Conjugation	Unconjugated
Purification	Affinity purification
Dilution Range	WB:1:500-1:2000 IF/ICC:1:50-1:200 ELISA:Recommended starting concentration is 1 μ g/mL. Please optimize the concentration based on your specific assay requirements.
Formulation	PBS with 0.05% Proclin300, 50% Glycerol, pH 7.3.
Isotype	IgG
Molecular Weight	Protein Mw: 49kDa Observed Mw: 49-60kDa
Storage Instruction	Store at -20°C for up to 1 year from the date of receipt, and avoid repeat freeze-thaw cycles.

TARGET INFORMATION

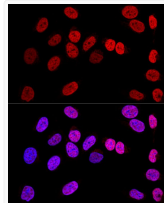
Gene ID	7490
Gene Symbol	WT1
UniProt ID	WT1_HUMAN
Immunogen Region	1-302
Immunogen Sequence	MEKGYSTVTFDGTSPYGHTP SHHAAQFPNHSFKHEDPMGQ QGSLGEQQYSVPPPVYGCHT PTDCTGSGQALLRTPYSSD NLYQMTSQCLECMTNQMNLG ATLKGVAAAGSSSSVKWTEGQ SNHSTGYESDNHTTILCGA QYRIHTHGVFVFRGIQDVRVVP GVAPTLVRSASETSEKRPFM CAYPGCNKRYFKLSHLQMHS RKHTGKPYQCDFKDCERRF SRSDQLKRHRRTGKPKPF
Specificity	Recombinant fusion protein containing a sequence corresponding to amino acids 1-302 of human WT1 (NP_001185480.1).

ADDITIONAL INFORMATION

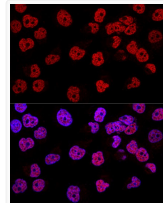
Note **STRICTLY FOR FURTHER SCIENTIFIC RESEARCH USE ONLY (RUO). MUST NOT TO BE USED IN DIAGNOSTIC OR THERAPEUTIC APPLICATIONS.**



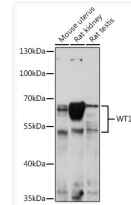
Immunofluorescence analysis of OVCAR-3 cells using WT1 Rabbit polyclonal antibody (STJ118729) at dilution of 1:100 (40x lens). Blue: DAPI for nuclear staining.



Confocal immunofluorescence analysis of U-2 OS cells using WT1 Polyclonal Antibody (STJ118729) at dilution of 1:200. Blue: DAPI for nuclear staining.



Confocal immunofluorescence analysis of HeLa cells using WT1 Polyclonal Antibody (STJ118729) at dilution of 1:200. Blue: DAPI for nuclear staining.



Western blot analysis of extracts of various cell lines, using WT1 antibody (STJ118729) at 1:1000 dilution. Secondary antibody: HRP Goat Anti-Rabbit IgG (H+L) (STJS000856) at 1:10000 dilution. Lysates/proteins: 25 μ g per lane. Blocking buffer: 3% nonfat dry milk in TBST. Detection: ECL Basic Kit. Exposure time: 30s.