

Anti-ACSL1 antibody (46-145) (STJ118692)

GENERAL INFORMATION

Product Type	Primary antibodies
Applications	WB/IF/ICC/IP/ELISA
Host / Source	Rabbit
Reactivity	Human/Mouse/Rat

PRODUCT PROPERTIES

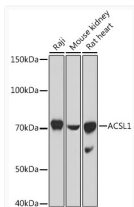
Clonality	Polyclonal
Concentration	Lot specific
Conjugation	Unconjugated
Purification	Affinity purification
Dilution Range	WB:1:500-1:1000 IF/CC:1:50-1:200 IP:0.5 Mu g-4 Mu g antibody for 200 Mu g-400 Mu g extracts of whole cells ELISA:Recommended starting concentration is 1 Mu g/mL. Please optimize the concentration based on your specific assay requirements
Formulation	PBS with 0.05% Proclin300, 50% Glycerol, pH 7.3.
Isotype	IgG
Molecular Weight	Protein Mw: 78kDa Observed Mw: 78kDa
Storage Instruction	Store at -20°C for up to 1 year from the date of receipt, and avoid repeat freeze-thaw cycles.

TARGET INFORMATION

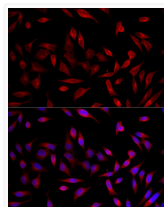
Gene ID	2180
Gene Symbol	ACSL1
UniProt ID	ACSL1_HUMAN
Immunogen Region	46-145
Immunogen Sequence	TRPKPLKPPCDLSMQSVEVA GSGGARRSALLDSDEPLVYF YDDVTTLYEGFQRGIQVSNN GPCLGSRKPDQPYEWSLYKQ VAELSECIGSALIQKGFKTA
Specificity	Recombinant fusion protein containing a sequence corresponding to amino acids 46-145 of human ACSL1 (NP_001986.2).

ADDITIONAL INFORMATION

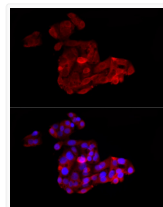
Note **STRICTLY FOR FURTHER SCIENTIFIC RESEARCH USE ONLY (RUO). MUST NOT TO BE USED IN DIAGNOSTIC OR THERAPEUTIC APPLICATIONS.**



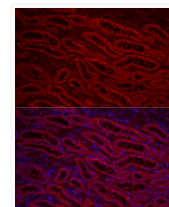
Western blot analysis of extracts of various cell lines, using ACSL1 antibody (STJ118692) at 1:1000 dilution. Secondary antibody: HRP Goat Anti-rabbit IgG (H+L) (STJS000856) at 1:10000 dilution. Lysates/proteins: 25 Mu g per lane. Blocking buffer: 3% non-fat dry milk in TBST. Detection: ECL Basic Kit. Exposure time: 10s.



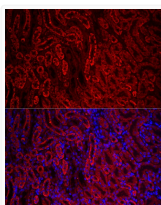
Immunofluorescence analysis of HeLa cells using ACSL1 rabbit polyclonal antibody (STJ118692) at dilution of 1:200 (40x lens). Blue: DAPI for nuclear staining.



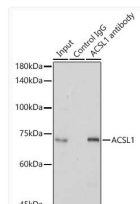
Immunofluorescence analysis of HepG2 cells using ACSL1 rabbit polyclonal antibody (STJ118692) at dilution of 1:200 (40x lens). Blue: DAPI for nuclear staining.



Immunofluorescence analysis of rat kidney using ACSL1 rabbit polyclonal antibody (STJ118692) at dilution of 1:200 (40x lens). Blue: DAPI for nuclear staining.



Immunofluorescence analysis of mouse kidney using ACSL1 rabbit polyclonal antibody (STJ118692) at dilution of 1:200 (40x lens). Blue: DAPI for nuclear staining.



Immunoprecipitation analysis of 300 Mu g extracts of Raji cells using 3 Mu g ACSL1 rabbit polyclonal antibody (STJ118692). Western blot was performed from the immunoprecipitate using ACSL1 rabbit polyclonal antibody (STJ118692) at a dilution of 1:1000.