

Anti-MBTPS1 antibody (803-1052) (STJ118682)

GENERAL INFORMATION

Product Type	Primary antibodies
Applications	WB/IHC-P/IF/ICC/ELISA
Host / Source	Rabbit
Reactivity	Human/Mouse

PRODUCT PROPERTIES

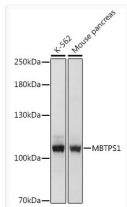
Clonality	Polyclonal
Concentration	Lot specific
Conjugation	Unconjugated
Purification	Affinity purification
Dilution Range	WB:1:500-1:2000 IHC-P:1:50-1:200 IF/ICC:1:50-1:200 ELISA:Recommended starting concentration is 1 µg/mL. Please optimize the concentration based on your specific assay requirements.
Formulation	PBS with 0.02% Sodium Azide, 50% Glycerol, pH7.3.
Isotype	IgG
Molecular Weight	Protein Mw: 118kDa Observed Mw: 117kDa
Storage Instruction	Store at -20°C for up to 1 year from the date of receipt, and avoid repeat freeze-thaw cycles.

TARGET INFORMATION

Gene ID	8720
Gene Symbol	MBTPS1
UniProt ID	MBTP1_HUMAN
Immunogen Region	803-1052
Immunogen Sequence	ITQTFKDQGLEVLKQETAVV ENVPILGLYQIPAEGGGRIV LYGDSNCLDDSHRQKDCFWL LDALLQYTSYGVTPPSLSHS GNRQRPPSGAGSVTPERMEG NHLHRYSKVLEAHLGDPKPR PLPACPRLSWAKPQLNETA PSNLWKHQKLLSIDLDKVVV PNFRRSRNPQVRPLSPGESGA WDIPGGIMPGRYNQEVGQTI PVFAFLGAMVVLAFFVVQIN KAKSRPKRRKPRVKRPQLM
Specificity	Recombinant fusion protein containing a sequence corresponding to amino acids 803-1052 of human MBTPS1 (NP_003782.1).

ADDITIONAL INFORMATION

Note STRICTLY FOR FURTHER SCIENTIFIC RESEARCH USE ONLY (RUO). MUST NOT TO BE USED IN DIAGNOSTIC OR THERAPEUTIC APPLICATIONS.



Western blot analysis of various lysates using MBTPS1 Rabbit polyclonal antibody (STJ118682) at 1:1000 dilution. Secondary antibody: HRP Goat Anti-Rabbit IgG (H+L) (STJS000856) at 1:10000 dilution. Lysates/proteins: 25 µg per lane. Blocking buffer: 3% nonfat dry milk in TBST. Detection: ECL Basic Kit. Exposure time: 1s.