

Anti-MAP3K11 antibody (140-260) (STJ118681)

GENERAL INFORMATION

Product Type	Primary antibodies
Applications	WB/ELISA
Host / Source	Rabbit
Reactivity	Mouse

PRODUCT PROPERTIES

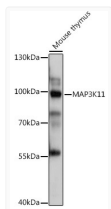
Clonality	Polyclonal
Concentration	Lot specific
Conjugation	Unconjugated
Purification	Affinity purification
Dilution Range	WB:1:500-1:1000 ELISA:Recommended starting concentration is 1 Mu g/mL. Please optimize the concentration based on your specific assay requirements.
Formulation	PBS with 0.01% Thimerosal, 50% Glycerol, pH 7.3.
Isotype	IgG
Molecular Weight	Protein Mw: 93kDa Observed Mw: 93kDa
Storage Instruction	Store at-20°C for up to 1 year from the date of receipt, and avoid repeat freeze-thaw cycles.

TARGET INFORMATION

Gene ID	4296
Gene Symbol	MAP3K11
UniProt ID	M3K11_HUMAN
Immunogen Region	140-260
Immunogen Sequence	LVAVKAAARQDPDEDISVTAE SVRQEARLFAMLAHPNIIAL KAVCLEEPNLCLVMEYAAGG PLSRALAGRRVPPHVLVNWVA VQIARGMHYLVHCEALVPVIH RDLKSNILLQLPIESDDME H
Specificity	Recombinant fusion protein containing a sequence corresponding to amino acids 140-260 of human MAP3K11 (NP_002410.1).

ADDITIONAL INFORMATION

Note STRICTLY FOR FURTHER SCIENTIFIC RESEARCH USE ONLY (RUO). MUST NOT TO BE USED IN DIAGNOSTIC OR THERAPEUTIC APPLICATIONS.



Western blot analysis of lysates from Mouse thymus, using MAP3K11 Rabbit polyclonal antibody (STJ118681) at 1:1000 dilution. Secondary antibody: HRP Goat Anti-Rabbit IgG (H+L) (STJS000856) at 1:10000 dilution. Lysates/proteins: 25 Mu g per lane. Blocking buffer: 3% nonfat dry milk in TBST. Detection: ECL Basic Kit. Exposure time: 1s.