

Anti-CSNK1A1 antibody (250-337) (STJ118665)

GENERAL INFORMATION

Product Type	Primary antibodies
Applications	WB/IHC-P/IF/ICC/ELISA
Host / Source	Rabbit
Reactivity	Human/Mouse/Rat

PRODUCT PROPERTIES

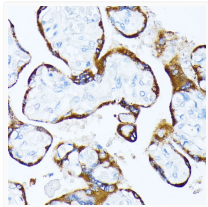
Clonality	Polyclonal
Concentration	Lot specific
Conjugation	Unconjugated
Purification	Affinity purification
Dilution Range	WB:1:500-1:2000 IHC-P:1:50-1:200 IF/CC:1:50-1:200 ELISA:Recommended starting concentration is 1 Mu g/mL. Please optimize the concentration based on your specific assay requirements.
Formulation	PBS with 0.01% Thimerosal, 50% Glycerol, pH 7.3.
Isotype	IgG
Molecular Weight	Protein Mw: 39kDa Observed Mw: 38kDa
Storage Instruction	Store at -20°C for up to 1 year from the date of receipt, and avoid repeat freeze-thaw cycles.

TARGET INFORMATION

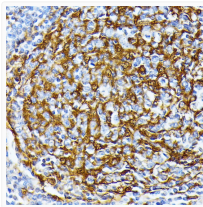
Gene ID	1452
Gene Symbol	CSNK1A1
UniProt ID	KC1A_HUMAN
Immunogen Region	250-337
Immunogen Sequence	EKKMSTPVEVLCKGFPAEFA MYLNYCRGLRFEEAPDYMVL RQLFRILFRTLNHQDYTFD WTMLKQKAAQQAASSGQQG QAQPTGKQTDKTKSNMKG
Specificity	A synthetic peptide corresponding to a sequence within amino acids 238-337 of human Casein Kinase 1 alpha (CSNK1A1) (NP_001883.4).

ADDITIONAL INFORMATION

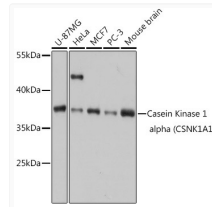
Note **STRICTLY FOR FURTHER SCIENTIFIC RESEARCH USE ONLY (RUO). MUST NOT TO BE USED IN DIAGNOSTIC OR THERAPEUTIC APPLICATIONS.**



Immunohistochemistry analysis of Casein Kinase 1 alpha (CSNK1A1) in paraffin-embedded human placenta using Casein Kinase 1 alpha (CSNK1A1) Rabbit polyclonal antibody (STJ118665) at dilution of 1:100 (40x lens). Perform microwave antigen retrieval with 10 mM PBS buffer pH 7. 2 before commencing with immunohistochemistry staining protocol.



Immunohistochemistry analysis of Casein Kinase 1 alpha (CSNK1A1) in paraffin-embedded human tonsil using Casein Kinase 1 alpha (CSNK1A1) Rabbit polyclonal antibody (STJ118665) at dilution of 1:100 (40x lens). Perform microwave antigen retrieval with 10 mM PBS buffer pH 7. 2 before commencing with immunohistochemistry staining protocol.



Western blot analysis of various lysates using Casein Kinase 1 alpha (CSNK1A1) Rabbit polyclonal antibody (STJ118665) at 1:1000 dilution. Secondary antibody: HRP Goat Anti-Rabbit IgG (H+L) (STJS000856) at 1:10000 dilution. Lysates/proteins: 25 Mu g per lane. Blocking buffer: 3% nonfat dry milk in TBST. Detection: ECL Basic Kit. Exposure time: 1s.