

## Anti-NLRP1 antibody (1370-1473) (STJ118652)

### GENERAL INFORMATION

Product Type	Primary antibodies
Applications	WB/IHC-P/IF/ICC/ELISA
Host / Source	Rabbit
Reactivity	Human/Mouse/Rat

### PRODUCT PROPERTIES

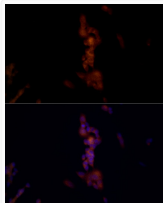
Clonality	Polyclonal
Concentration	Lot specific
Conjugation	Unconjugated
Purification	Affinity purification
Dilution Range	WB:1:500-1:1000 IHC-P:1:50-1:200 IF/ICC:1:50-1:200 ELISA:Recommended starting concentration is 1 µg/mL. Please optimize the concentration based on your specific assay requirements.
Formulation	PBS with 0.05% Proclin300, 50% Glycerol, pH 7.3.
Isotype	IgG
Molecular Weight	Protein Mw: 166kDa Observed Mw: 160kDa
Storage Instruction	Store at -20°C for up to 1 year from the date of receipt, and avoid repeat freeze-thaw cycles.

### TARGET INFORMATION

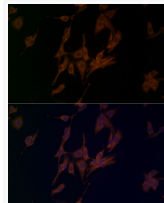
Gene ID	<a href="#">22861</a>
Gene Symbol	<a href="#">NLRP1</a>
UniProt ID	<a href="#">NLRP1_HUMAN</a>
Immunogen Region	1370-1473
Immunogen Sequence	PSPLDAPQLLHFVDQYREQL IARVTSVEVVLDKLHGQVLS QEYERVLAENTRPSQMRKL FSLSQSWDRKCKDGLYQALK ETHPHLIMELWEKSGSKKGLL PLSS
Specificity	Recombinant fusion protein containing a sequence corresponding to amino acids 1370-1473 of human NLRP1 (NP_127497.1).

### ADDITIONAL INFORMATION

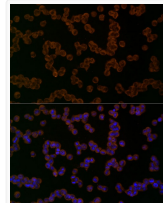
Note **STRICTLY FOR FURTHER SCIENTIFIC RESEARCH USE ONLY (RUO). MUST NOT TO BE USED IN DIAGNOSTIC OR THERAPEUTIC APPLICATIONS.**



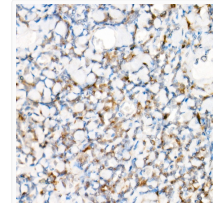
Immunofluorescence analysis of SH-SY5Y cells using NLRP1 Rabbit polyclonal antibody (STJ118652) at dilution of 1:50 (40x lens). Blue: DAPI for nuclear staining.



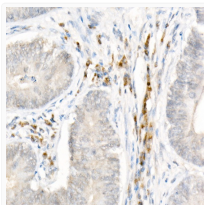
Immunofluorescence analysis of PC-12 cells using NLRP1 Rabbit polyclonal antibody (STJ118652) at dilution of 1:50 (40x lens). Blue: DAPI for nuclear staining.



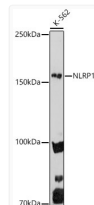
Immunofluorescence analysis of K-562 cells using NLRP1 Rabbit polyclonal antibody (STJ118652) at dilution of 1:50 (40x lens). Blue: DAPI for nuclear staining.



Immunohistochemistry analysis of paraffin-embedded human tonsil using NLRP1 Rabbit polyclonal antibody (STJ118652) at dilution of 1:50 (40x lens). Perform high pressure antigen retrieval with 10 mM citrate buffer pH 6.0 before commencing with immunohistochemistry staining protocol.



Immunohistochemistry analysis of paraffin-embedded human colon using NLRP1 Rabbit polyclonal antibody (STJ118652) at dilution of 1:50 (40x lens). Perform high pressure antigen retrieval with 10 mM citrate buffer pH 6.0 before commencing with immunohistochemistry staining protocol.



Western blot analysis of extracts of K-562 cells, using NLRP1 antibody (STJ118652) at 1:1000 dilution. Secondary antibody: HRP Goat Anti-Rabbit IgG (H+L) (STJS000856) at 1:10000 dilution. Lysates/proteins: 25 µg per lane. Blocking buffer: 3% nonfat dry milk in TBST. Detection: ECL Enhanced Kit. Exposure time: 180s.