

## Anti-AQP2 antibody (147-271) (STJ118649)

### GENERAL INFORMATION

Product Type	Primary antibodies
Applications	WB/IHC-P/IF/ICC/ELISA
Host / Source	Rabbit
Reactivity	Human/Mouse/Rat

### PRODUCT PROPERTIES

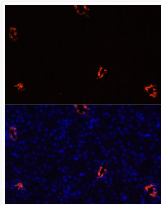
Clonality	Polyclonal
Concentration	Lot specific
Conjugation	Unconjugated
Purification	Affinity purification
Dilution Range	WB:1:500-1:1000 IHC-P:1:50-1:100 IF/ICC:1:50-1:200 ELISA:Recommended starting concentration is 1 µg/mL. Please optimize the concentration based on your specific assay requirements.
Formulation	PBS with 0.05% Proclin300, 50% Glycerol, pH 7.3.
Isotype	IgG
Molecular Weight	Protein Mw: 29kDa Observed Mw: 26kDa
Storage Instruction	Store at -20°C for up to 1 year from the date of receipt, and avoid repeat freeze-thaw cycles.

### TARGET INFORMATION

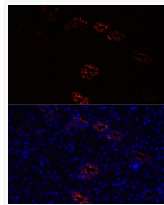
Gene ID	<a href="#">359</a>
Gene Symbol	<a href="#">AQP2</a>
UniProt ID	<a href="#">AQP2_HUMAN</a>
Immunogen Region	147-271
Immunogen Sequence	ASTDERRGENPGTPALSIGF SVALGHLLGIHYTGCSMNPA RSLAPAVVTGKFDDHWVFWI GPLVGAILGSLLYNYVLFPP AKLSERLAVLKGLEPDTDW EEREVRRRQSVLHSPQSLP RGTKA
Specificity	A synthetic peptide corresponding to a sequence within amino acids 147-271 of human AQP2 (NP_000477.1).

### ADDITIONAL INFORMATION

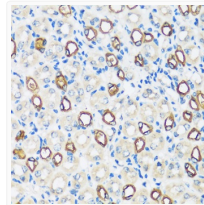
Note STRICTLY FOR FURTHER SCIENTIFIC RESEARCH USE ONLY (RUO). MUST NOT TO BE USED IN DIAGNOSTIC OR THERAPEUTIC APPLICATIONS.



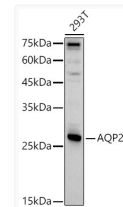
Immunofluorescence analysis of mouse kidney cells using AQP2 antibody (STJ118649) at dilution of 1:100. Blue: DAPI for nuclear staining.



Immunofluorescence analysis of rat kidney cells using AQP2 antibody (STJ118649) at dilution of 1:100. Blue: DAPI for nuclear staining.



Immunohistochemistry analysis of paraffin-embedded mouse kidney using AQP2 antibody (STJ118649) at dilution of 1:100 (40x lens). Perform microwave antigen retrieval with 10 mM PBS buffer pH 7.2 before commencing with immunohistochemistry staining protocol.



Western blot analysis of extracts of 293T cells, using AQP2 antibody (STJ118649) at 1:1000 dilution. Secondary antibody: HRP Goat Anti-Rabbit IgG (H+L) (STJS000856) at 1:10000 dilution. Lysates/proteins: 25 µg per lane. Blocking buffer: 3% nonfat dry milk in TBST. Detection: ECL Basic Kit. Exposure time: 90s.