

Anti-VIRMA antibody (1400-1700) (STJ118641)

GENERAL INFORMATION

Product Type	Primary antibodies
Applications	WB/IHC-P/IF/ICC/ELISA
Host / Source	Rabbit
Reactivity	Human/Mouse/Rat

PRODUCT PROPERTIES

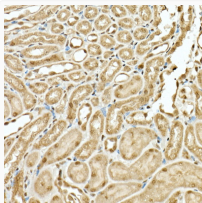
Clonality	Polyclonal
Concentration	Lot specific
Conjugation	Unconjugated
Purification	Affinity purification
Dilution Range	WB:1:1000-1:5000 IHC-P:1:50-1:200 IF/CC:1:50-1:100 ELISA:Recommended starting concentration is 1 Mu g/mL. Please optimize the concentration based on your specific assay requirements.
Formulation	PBS with 0.05% Proclin300, 50% Glycerol, pH 7.3.
Isotype	IgG
Molecular Weight	Protein Mw: 202kDa Observed Mw: 210kDa
Storage Instruction	Store at -20°C for up to 1 year from the date of receipt, and avoid repeat freeze-thaw cycles.

TARGET INFORMATION

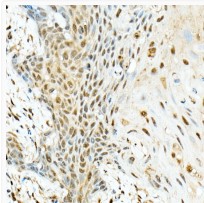
Gene ID	25962
Gene Symbol	VIRMA
UniProt ID	VIR_HUMAN
Immunogen Region	1400-1700
Immunogen Sequence	FMRQLNSDTIGCCGDDNGL MEVEGAHTSRTMSINAAELK QLLQSKEESPENLFLELEKL VLEHSKDDDNLDLSDSVVG LKQMLESSGDPLPLSDQDVE PVL SAPESLQNLFNRTAYV LADVMDLQKSMWFTPFQAE EIDTDLVLKVDLIELSEKC CSDFDLHSELESLFLSEPSS PGRTKTKGFKLGGKHKHETF ITSSGKSEYIEPAKRAHVVP PPRGRGRGGFGQGIRPHDI
Specificity	Recombinant fusion protein containing a sequence corresponding to amino acids 1400-1700 of human KIAA1429 (NP_056311.2).

ADDITIONAL INFORMATION

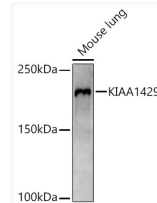
Note **STRICTLY FOR FURTHER SCIENTIFIC RESEARCH USE ONLY (RUO). MUST NOT TO BE USED IN DIAGNOSTIC OR THERAPEUTIC APPLICATIONS.**



Immunohistochemistry analysis of paraffin-embedded mouse kidney using KIAA1429 Rabbit polyclonal antibody (STJ118641) at dilution of 1:200 (40x lens). Perform high pressure antigen retrieval with 10 mM citrate buffer pH 6.0 before commencing with immunohistochemistry staining protocol.



Immunohistochemistry analysis of paraffin-embedded human esophageal cancer using KIAA1429 Rabbit polyclonal antibody (STJ118641) at dilution of 1:200 (40x lens). Perform high pressure antigen retrieval with 10 mM citrate buffer pH 6.0 before commencing with immunohistochemistry staining protocol.



Western blot analysis of extracts of Mouse lung, using KIAA1429 antibody (STJ118641) at 1:2000 dilution. Secondary antibody: HRP Goat Anti-Rabbit IgG (H+L) (STJS000856) at 1:10000 dilution. Lysates/proteins: 25 Mu g per lane. Blocking buffer: 3% nonfat dry milk in TBST. Detection: ECL Basic Kit. Exposure time: 30s.