

Anti-SALL4 antibody (853-1053) (STJ118633)

GENERAL INFORMATION

Product Type	Primary antibodies
Applications	WB/IHC-P/IF/ICC/ELISA
Host / Source	Rabbit
Reactivity	Human/Mouse/Rat

PRODUCT PROPERTIES

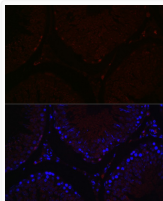
Clonality	Polyclonal
Concentration	Lot specific
Conjugation	Unconjugated
Purification	Affinity purification
Dilution Range	WB:1:500-1:2000 IHC-P:1:50-1:200 IF/ICC:1:50-1:200 ELISA:Recommended starting concentration is 1 µg/mL. Please optimize the concentration based on your specific assay requirements.
Formulation	PBS with 0.01% Thimerosal, 50% Glycerol, pH 7.3.
Isotype	IgG
Molecular Weight	Protein Mw: 112kDa Observed Mw: 75kDa
Storage Instruction	Store at -20°C for up to 1 year from the date of receipt, and avoid repeat freeze-thaw cycles.

TARGET INFORMATION

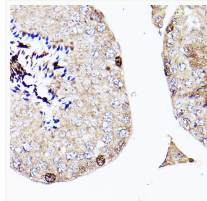
Gene ID	57167
Gene Symbol	SALL4
UniProt ID	SALL4_HUMAN
Immunogen Region	853-1053
Immunogen Sequence	PGMTPLLAQPRRQAKQHGC TRCGKNFSSASALQIHERTH TGEKPFVCNICGRAFTTKGN LKVHYMTHGANNNSARRGRK LAIENTMALLGTDGKRVSEI FPKEILAPSVNVDPVVWNQY TSMNLNGGLAVKTNEISVIQS GGVPTLPVSLGATSVVNNAT VSKMDGSQSGISADVEKPSA TDGVPKHQFPHFLEENKIAV S
Specificity	Recombinant fusion protein containing a sequence corresponding to amino acids 853-1053 of human Sall4 (NP_065169.1).

ADDITIONAL INFORMATION

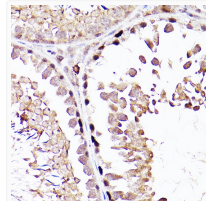
Note STRICTLY FOR FURTHER SCIENTIFIC RESEARCH USE ONLY (RUO). MUST NOT TO BE USED IN DIAGNOSTIC OR THERAPEUTIC APPLICATIONS.



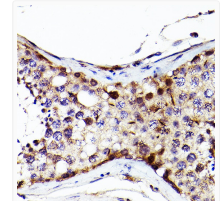
Immunofluorescence analysis of paraffin-embedded rat testis using Sall4 Rabbit polyclonal antibody (STJ118633) at dilution of 1:100 (40x lens). Secondary antibody: Cy3 Goat Anti-Rabbit IgG (H+L) at 1:500 dilution. Blue: DAPI for nuclear staining.



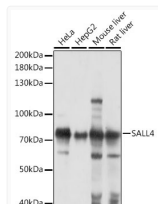
Immunohistochemistry analysis of Sall4 in paraffin-embedded Mouse testis using Sall4 Rabbit polyclonal antibody (STJ118633) at dilution of 1:200 (40x lens). Perform high pressure antigen retrieval with 10 mM citrate buffer pH 6.0 before commencing with immunohistochemistry staining protocol.



Immunohistochemistry analysis of Sall4 in paraffin-embedded Rat testis using Sall4 Rabbit polyclonal antibody (STJ118633) at dilution of 1:200 (40x lens). Perform high pressure antigen retrieval with 10 mM citrate buffer pH 6.0 before commencing with immunohistochemistry staining protocol.



Immunohistochemistry analysis of Sall4 in paraffin-embedded Human testis using Sall4 Rabbit polyclonal antibody (STJ118633) at dilution of 1:200 (40x lens). Perform high pressure antigen retrieval with 10 mM citrate buffer pH 6.0 before commencing with immunohistochemistry staining protocol.



Western blot analysis of various lysates using Sall4 Rabbit polyclonal antibody (STJ118633) at 1:1000 dilution. Secondary antibody: HRP Goat Anti-Rabbit IgG (H+L) (STJS000856) at 1:10000 dilution. Lysates/proteins: 25 µg per lane. Blocking buffer: 3% nonfat dry milk in TBST. Detection: ECL Basic Kit. Exposure time: 30s.