

Anti-MYOCD antibody (680-780) (STJ118599)

GENERAL INFORMATION

Product Type	Primary antibodies
Applications	WB/IHC-P/ELISA
Host / Source	Rabbit
Reactivity	Human/Rat

PRODUCT PROPERTIES

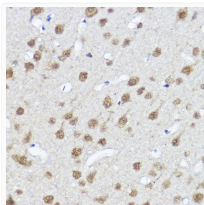
Clonality	Polyclonal
Concentration	Lot specific
Conjugation	Unconjugated
Purification	Affinity purification
Dilution Range	WB:1:500-1:2000 IHC-P:1:50-1:200 ELISA:Recommended starting concentration is 1 µg/mL. Please optimize the concentration based on your specific assay requirements.
Formulation	PBS with 0.05% Proclin300, 50% Glycerol, pH 7.3.
Isotype	IgG
Molecular Weight	Protein Mw: 102kDa Observed Mw: Refer to figures
Storage Instruction	Store at -20°C for up to 1 year from the date of receipt, and avoid repeat freeze-thaw cycles.

TARGET INFORMATION

Gene ID	93649
Gene Symbol	MYOCD
UniProt ID	MYCD_HUMAN
Immunogen Region	680-780
Immunogen Sequence	SQVCTAQMAGLHSSDKVGPK FSIPSPTFKSSSSAISEVTQ PPSYEDAVKQMQMTRSQQMDE LLDVLIESGEMPADAREDHS CLQKVPKIPRSSRSPTAVLT K
Specificity	A synthetic peptide corresponding to a sequence within amino acids 680-780 of human MYOCD (NP_705832.1).

ADDITIONAL INFORMATION

Note STRICTLY FOR FURTHER SCIENTIFIC RESEARCH USE ONLY (RUO). MUST NOT TO BE USED IN DIAGNOSTIC OR THERAPEUTIC APPLICATIONS.



Immunohistochemistry analysis of MYOCD in paraffin-embedded Rat brain using MYOCD Rabbit polyclonal antibody (STJ118599) at dilution of 1:100 (40x lens). Perform high pressure antigen retrieval with 10 mM citrate buffer pH 6.0 before commencing with immunohistochemistry staining protocol.