

## Anti-NECTIN4 antibody (32-146) (STJ118589)

### GENERAL INFORMATION

Product Type	Primary antibodies
Applications	WB/ELISA
Host / Source	Rabbit
Reactivity	Human/Mouse/Rat

### PRODUCT PROPERTIES

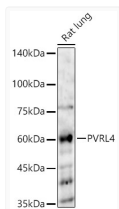
Clonality	Polyclonal
Concentration	Lot specific
Conjugation	Unconjugated
Purification	Affinity purification
Dilution Range	WB:1:1000-1:5000 ELISA:Recommended starting concentration is 1 µg/mL. Please optimize the concentration based on your specific assay requirements.
Formulation	PBS with 0.05% Proclin300, 50% Glycerol, pH 7.3.
Isotype	IgG
Molecular Weight	Protein Mw: 55kDa Observed Mw: 62kDa/75kDa
Storage Instruction	Store at -20°C for up to 1 year from the date of receipt, and avoid repeat freeze-thaw cycles.

### TARGET INFORMATION

Gene ID	<a href="#">81607</a>
Gene Symbol	<a href="#">NECTIN4</a>
UniProt ID	<a href="#">NECT4_HUMAN</a>
Immunogen Region	32-146
Immunogen Sequence	GELETSDVVTVVLGQDAKLP CFYRGDSGEQVGVAVARVD AGEGAQELALLHSKYGLHVS PAYEGRVEQPPPPRNPLDGS VLLRNAVQADEGEYECRVST FPAGSFQARLRRLVL
Specificity	Recombinant fusion protein containing a sequence corresponding to amino acids 32-146 of human PVRL4 (NP_112178.2).

### ADDITIONAL INFORMATION

Note STRICTLY FOR FURTHER SCIENTIFIC RESEARCH USE ONLY (RUO). MUST NOT TO BE USED IN DIAGNOSTIC OR THERAPEUTIC APPLICATIONS.



Western blot analysis of various lysates, using PVRL4 Rabbit polyclonal antibody (STJ118589) at 1:2000 dilution. Secondary antibody: HRP Goat Anti-Rabbit IgG (H+L) (STJS000856) at 1:10000 dilution. Lysates/proteins: 25 µg per lane. Blocking buffer: 3% nonfat dry milk in TBST. Detection: ECL Basic Kit. Exposure time: 90s.