

Anti-CCDC88A antibody (1571-1870) (STJ118572)

GENERAL INFORMATION

Product Type	Primary antibodies
Applications	WB/ELISA
Host / Source	Rabbit
Reactivity	Human

PRODUCT PROPERTIES

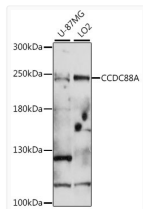
Clonality	Polyclonal
Concentration	Lot specific
Conjugation	Unconjugated
Purification	Affinity purification
Dilution Range	WB:1:500-1:2000 ELISA:Recommended starting concentration is 1 µg/mL. Please optimize the concentration based on your specific assay requirements.
Formulation	PBS with 0.01% Thimerosal, 50% Glycerol, pH 7.3.
Isotype	IgG
Molecular Weight	Protein Mw: 216kDa Observed Mw: 220kDa
Storage Instruction	Store at -20°C for up to 1 year from the date of receipt, and avoid repeat freeze-thaw cycles.

TARGET INFORMATION

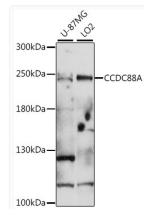
Gene ID	55704
Gene Symbol	CCDC88A
UniProt ID	GRDN_HUMAN
Immunogen Region	1571-1870
Immunogen Sequence	DDSTGSRVHASRPASLD SG RTSTNSNNNASLHEVKAGA VNNQSRPQSHSSGEFLLHD HEAWSSSGSSPIQYLKRQTR SSPVLQHKISETLESRRHKKI KTGSPGSEVVTLQQFLEESN KLTSVQIKSSSQENLLDEVM KSLSVSSDFLGKDKPVSCGL ARSVSGKTPGDFYDRRTTKP EFLRPGPRKTEDTYFISSAG KPTPGTQGGIKLVKESLSR QSKDSNPYATLPRASSVIS
Specificity	Recombinant fusion protein containing a sequence corresponding to amino acids 1571-1870 of human CCDC88A (NP_001129069.1).

ADDITIONAL INFORMATION

Note **STRICTLY FOR FURTHER SCIENTIFIC RESEARCH USE ONLY (RUO). MUST NOT TO BE USED IN DIAGNOSTIC OR THERAPEUTIC APPLICATIONS.**



Western blot analysis of extracts of various cell lines, using CCDC88A antibody (STJ118572) at 1:1000 dilution. Secondary antibody: HRP Goat Anti-rabbit IgG (H+L) (STJS000856) at 1:10000 dilution. Lysates/proteins: 25 µg per lane. Blocking buffer: 3% non-fat dry milk in TBST. Detection: ECL Basic Kit. Exposure time: 90s.



Western blot analysis of extracts of various cell lines, using CCDC88A antibody (STJ118572) at 1:1000 dilution. Secondary antibody: HRP Goat Anti-rabbit IgG (H+L) (STJS000856) at 1:10000 dilution. Lysates/proteins: 25 µg per lane. Blocking buffer: 3% non-fat dry milk in TBST. Detection: ECL Basic Kit. Exposure time: 90s.