

Anti-EML4 antibody (360-560) (STJ118557)

GENERAL INFORMATION

Product Type	Primary antibodies
Applications	WB/IHC-P/IF/ICC/ELISA
Host / Source	Rabbit
Reactivity	Human/Mouse/Rat

PRODUCT PROPERTIES

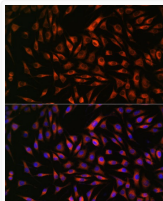
Clonality	Polyclonal
Concentration	Lot specific
Conjugation	Unconjugated
Purification	Affinity purification
Dilution Range	WB:1:500-1:2000 IHC-P:1:50-1:200 IF/ICC:1:50-1:200 ELISA:Recommended starting concentration is 1 Mu g/mL. Please optimize the concentration based on your specific assay requirements.
Formulation	PBS with 0.01% Thimerosal, 50% Glycerol, pH 7.3.
Isotype	IgG
Molecular Weight	Protein Mw: 109kDa Observed Mw: 120kDa
Storage Instruction	Store at -20°C for up to 1 year from the date of receipt, and avoid repeat freeze-thaw cycles.

TARGET INFORMATION

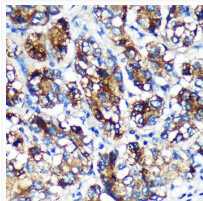
Gene ID	27436
Gene Symbol	EML4
UniProt ID	EMAL4_HUMAN
Immunogen Region	360-560
Immunogen Sequence	GTFERGVGCLDFSKADSGVH LCVIDDSEHMLTVWDWQKK AKGAEIKTTNEVVLAVEFHP TDANTIITCGKSHIFFWTWS GNSLTRKQGIFGKYEKPKFV QCLAFLNGDVLTDGDSGGVM LIWSKTTVEPTPGKGPQGVY QISKQIKAHDGVSFTLCQMR NGMLLTGGGKDRKIIWLDHD LNPEREIEVPDQYGTIRAVA E
Specificity	Recombinant fusion protein containing a sequence corresponding to amino acids 360-560 of human EML4 (NP_061936.2).

ADDITIONAL INFORMATION

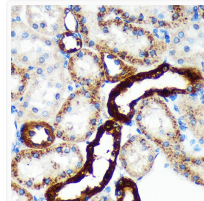
Note **STRICTLY FOR FURTHER SCIENTIFIC RESEARCH USE ONLY (RUO). MUST NOT TO BE USED IN DIAGNOSTIC OR THERAPEUTIC APPLICATIONS.**



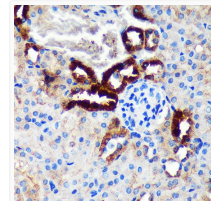
Immunofluorescence analysis of L929 cells using EML4 Rabbit polyclonal antibody (STJ118557) at dilution of 1:100. Secondary antibody: Cy3 Goat Anti-Rabbit IgG (H+L) at 1:500 dilution. Blue: DAPI for nuclear staining.



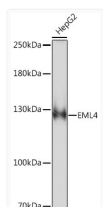
Immunohistochemistry analysis of EML4 in paraffin-embedded Human liver cancer using EML4 Rabbit polyclonal antibody (STJ118557) at dilution of 1:100 (40x lens). Perform microwave antigen retrieval with 10 mM PBS buffer pH 7. 2 before commencing with immunohistochemistry staining protocol.



Immunohistochemistry analysis of EML4 in paraffin-embedded Rat kidney using EML4 Rabbit polyclonal antibody (STJ118557) at dilution of 1:100 (40x lens). Perform microwave antigen retrieval with 10 mM PBS buffer pH 7. 2 before commencing with immunohistochemistry staining protocol.



Immunohistochemistry analysis of EML4 in paraffin-embedded Mouse kidney using EML4 Rabbit polyclonal antibody (STJ118557) at dilution of 1:100 (40x lens). Perform microwave antigen retrieval with 10 mM PBS buffer pH 7. 2 before commencing with immunohistochemistry staining protocol.



Western blot analysis of lysates from HepG2 cells, using EML4 Rabbit polyclonal antibody (STJ118557) at 1:10000 dilution. Secondary antibody: HRP Goat Anti-Rabbit IgG (H+L) (STJS000856) at 1:10000 dilution. Lysates/proteins: 25 Mu g per lane. Blocking buffer: 3% nonfat dry milk in TBST. Detection: ECL Basic Kit. Exposure time: 90s.