

Anti-FBXO21 antibody (440-621) (STJ118547)

GENERAL INFORMATION

Product Type	Primary antibodies
Applications	WB/IHC-P/IF/ICC/ELISA
Host / Source	Rabbit
Reactivity	Human/Mouse/Rat

PRODUCT PROPERTIES

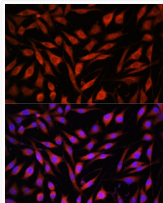
Clonality	Polyclonal
Concentration	Lot specific
Conjugation	Unconjugated
Purification	Affinity purification
Dilution Range	WB:1:500-1:2000 IHC-P:1:50-1:200 IF/ICC:1:50-1:200 ELISA:Recommended starting concentration is 1 Mu g/mL. Please optimize the concentration based on your specific assay requirements.
Formulation	PBS with 0.01% Thimerosal, 50% Glycerol, pH 7.3.
Isotype	IgG
Molecular Weight	Protein Mw: 72kDa Observed Mw: 72kDa
Storage Instruction	Store at -20°C for up to 1 year from the date of receipt, and avoid repeat freeze-thaw cycles.

TARGET INFORMATION

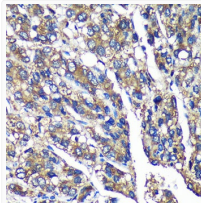
Gene ID	23014
Gene Symbol	FBXO21
UniProt ID	FBX21_HUMAN
Immunogen Region	440-621
Immunogen Sequence	PEKVLIDILQHIQTLDPGQHG AVGYLVQHTLEHIERKKEEV GVEVKLRSDKHRDVCYSIG LIMKHKRYGYNCVIYGDWPT CMMGHEWIRNMNVHSLPHGH HQPFYNVLVEDGSCRYAAQE NLEYNVEPQEISHPDVGRYF SEFTGTHYIPNAELEIRYPE DLEFVYETVQNIYSAKKENI DE
Specificity	Recombinant fusion protein containing a sequence corresponding to amino acids 440-621 of human FBXO21 (NP_055817.1).

ADDITIONAL INFORMATION

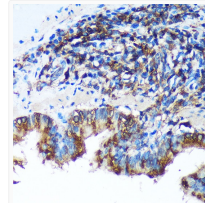
Note STRICTLY FOR FURTHER SCIENTIFIC RESEARCH USE ONLY (RUO). MUST NOT TO BE USED IN DIAGNOSTIC OR THERAPEUTIC APPLICATIONS.



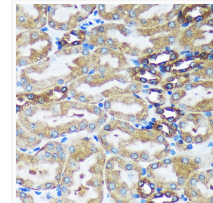
Immunofluorescence analysis of L929 cells using FBXO21 Rabbit polyclonal antibody (STJ118547) at dilution of 1:100. Secondary antibody: Cy3 Goat Anti-Rabbit IgG (H+L) at 1:500 dilution. Blue: DAPI for nuclear staining.



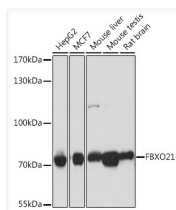
Immunohistochemistry analysis of FBXO21 in paraffin-embedded Human liver cancer using FBXO21 Rabbit polyclonal antibody (STJ118547) at dilution of 1:100 (40x lens). Perform microwave antigen retrieval with 10 mM PBS buffer pH 7. 2 before commencing with immunohistochemistry staining protocol.



Immunohistochemistry analysis of FBXO21 in paraffin-embedded Rat lung using FBXO21 Rabbit polyclonal antibody (STJ118547) at dilution of 1:100 (40x lens). Perform microwave antigen retrieval with 10 mM PBS buffer pH 7. 2 before commencing with immunohistochemistry staining protocol.



Immunohistochemistry analysis of FBXO21 in paraffin-embedded Mouse kidney using FBXO21 Rabbit polyclonal antibody (STJ118547) at dilution of 1:100 (40x lens). Perform microwave antigen retrieval with 10 mM PBS buffer pH 7. 2 before commencing with immunohistochemistry staining protocol.



Western blot analysis of various lysates using FBXO21 Rabbit polyclonal antibody (STJ118547) at 1:1000 dilution. Secondary antibody: HRP Goat Anti-Rabbit IgG (H+L) (STJS000856) at 1:10000 dilution. Lysates/proteins: 25 Mu g per lane. Blocking buffer: 3% nonfat dry milk in TBST. Detection: ECL Basic Kit. Exposure time: 1s.