

## Anti-ABI1 antibody (180-230) (STJ118532)

### GENERAL INFORMATION

|               |                    |
|---------------|--------------------|
| Product Type  | Primary antibodies |
| Applications  | WB/IHC-P/ELISA     |
| Host / Source | Rabbit             |
| Reactivity    | Human/Mouse/Rat    |

### PRODUCT PROPERTIES

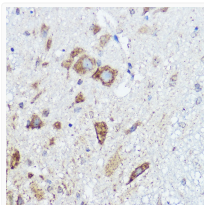
|                     |  |
|---------------------|--|
| Clonality           | Polyclonal   |
| Concentration       | Lot specific   |
| Conjugation         | Unconjugated   |
| Purification        | Affinity purification  |
| Dilution Range      | WB:1:500-1:1000<br>IHC-P:1:50-1:200<br>ELISA:Recommended starting concentration is 1 µg/mL. Please optimize the concentration based on your specific assay requirements. |
| Formulation         | PBS with 0.01% Thimerosal, 50% Glycerol, pH 7.3.   |
| Isotype             | IgG  |
| Molecular Weight    | Protein Mw: 55kDa<br>Observed Mw: 55-65kDa   |
| Storage Instruction | Store at -20°C for up to 1 year from the date of receipt, and avoid repeat freeze-thaw cycles.   |

### TARGET INFORMATION

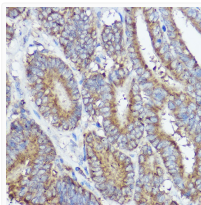
|                    |   |
|--------------------|---|
| Gene ID            | <a href="#">10006</a>   |
| Gene Symbol        | <a href="#">ABI1</a>  |
| UniProt ID         | <a href="#">ABI1_HUMAN</a>  |
| Immunogen Region   | 180-230   |
| Immunogen Sequence | PMSGRGTLGRNTPYKLEPV KPPTVPNDYMTSPARLGSQH SPGRATSLNQR  |
| Specificity        | Recombinant fusion protein containing a sequence corresponding to amino acids 180-230 of human ABI1 (NP_001012770). |

### ADDITIONAL INFORMATION

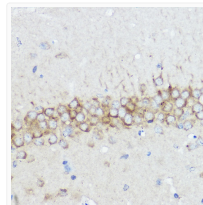
Note **STRICTLY FOR FURTHER SCIENTIFIC RESEARCH USE ONLY (RUO). MUST NOT TO BE USED IN DIAGNOSTIC OR THERAPEUTIC APPLICATIONS.**



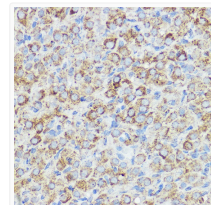
Immunohistochemistry analysis of ABI1 in paraffin-embedded mouse spinal cord using ABI1 Rabbit polyclonal antibody (STJ118532) at dilution of 1:50 (40x lens). Perform high pressure antigen retrieval with 10 mM citrate buffer pH 6.0 before commencing with immunohistochemistry staining protocol.



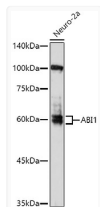
Immunohistochemistry analysis of ABI1 in paraffin-embedded human colon carcinoma using ABI1 Rabbit polyclonal antibody (STJ118532) at dilution of 1:50 (40x lens). Perform high pressure antigen retrieval with 10 mM citrate buffer pH 6.0 before commencing with immunohistochemistry staining protocol.



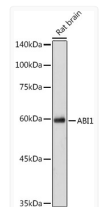
Immunohistochemistry analysis of ABI1 in paraffin-embedded rat brain using ABI1 Rabbit polyclonal antibody (STJ118532) at dilution of 1:50 (40x lens). Perform high pressure antigen retrieval with 10 mM citrate buffer pH 6.0 before commencing with immunohistochemistry staining protocol.



Immunohistochemistry analysis of ABI1 in paraffin-embedded rat ovary using ABI1 Rabbit polyclonal antibody (STJ118532) at dilution of 1:50 (40x lens). Perform high pressure antigen retrieval with 10 mM citrate buffer pH 6.0 before commencing with immunohistochemistry staining protocol.



Western blot analysis of lysates from Neuro-2a cells, using ABI1 Rabbit polyclonal antibody (STJ118532) at 1:1000 dilution. Secondary antibody: HRP Goat Anti-Rabbit IgG (H+L) (STJS000856) at 1:10000 dilution. Lysates/proteins: 25 µg per lane. Blocking buffer: 3% nonfat dry milk in TBST. Detection: ECL Enhanced Kit. Exposure time: 180s.



Western blot analysis of lysates from Rat brain, using ABI1 Rabbit polyclonal antibody (STJ118532) at 1:1000 dilution. Secondary antibody: HRP Goat Anti-Rabbit IgG (H+L) (STJS000856) at 1:10000 dilution. Lysates/proteins: 25 µg per lane. Blocking buffer: 3% nonfat dry milk in TBST. Detection: ECL Basic Kit. Exposure time: 30s.