

## Anti-SEC24D antibody (830-1000) (STJ118531)

### GENERAL INFORMATION

Product Type	Primary antibodies
Applications	WB/IF/ICC/ELISA
Host / Source	Rabbit
Reactivity	Human/Mouse/Rat

### PRODUCT PROPERTIES

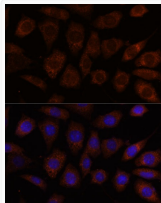
Clonality	Polyclonal
Concentration	Lot specific
Conjugation	Unconjugated
Purification	Affinity purification
Dilution Range	WB:1:500-1:2000 IF/CC:1:50-1:200 ELISA:Recommended starting concentration is 1 µg/mL. Please optimize the concentration based on your specific assay requirements.
Formulation	PBS with 0.01% Thimerosal, 50% Glycerol, pH 7.3.
Isotype	IgG
Molecular Weight	Protein Mw: 113kDa Observed Mw: 113kDa
Storage Instruction	Store at -20°C for up to 1 year from the date of receipt, and avoid repeat freeze-thaw cycles.

### TARGET INFORMATION

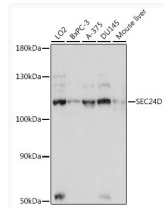
Gene ID	<a href="#">9871</a>
Gene Symbol	<a href="#">SEC24D</a>
UniProt ID	<a href="#">SC24D_HUMAN</a>
Immunogen Region	830-1000
Immunogen Sequence	AASQLILPDSMKVLPVYMNC LLKNCVLLSRPEISTDERAY QRQLVMTMGVADSQLEFFYPQ LLPIHTLDVKSTMLPAAVRC SESRLSEEGIFLLANGLHMF LWLVGVSSPPELIQIGIFNVPS FAHINTDMTLLPEVGNPYSQ QLRMIMGIIQQKRPYSMKLT IVKQREQPEMV
Specificity	Recombinant fusion protein containing a sequence corresponding to amino acids 830-1000 of human SEC24D (NP_001304995.1).

### ADDITIONAL INFORMATION

Note **STRICTLY FOR FURTHER SCIENTIFIC RESEARCH USE ONLY (RUO). MUST NOT TO BE USED IN DIAGNOSTIC OR THERAPEUTIC APPLICATIONS.**



Immunofluorescence analysis of L929 cells using SEC24D Rabbit polyclonal antibody (STJ118531) at dilution of 1:100. Secondary antibody: Cy3 Goat Anti-Rabbit IgG (H+L) at 1:500 dilution. Blue: DAPI for nuclear staining.



Western blot analysis of various lysates using SEC24D Rabbit polyclonal antibody (STJ118531) at 1:1000 dilution. Secondary antibody: HRP Goat Anti-Rabbit IgG (H+L) (STJS000856) at 1:10000 dilution. Lysates/proteins: 25 µg per lane. Blocking buffer: 3% nonfat dry milk in TBST. Detection: ECL Basic Kit. Exposure time: 1s.