

## Anti-RAPGEF1 antibody (844-1095) (STJ118491)

### GENERAL INFORMATION

Product Type	Primary antibodies
Applications	WB/IF/ICC/ELISA
Host / Source	Rabbit
Reactivity	Human/Mouse/Rat

### PRODUCT PROPERTIES

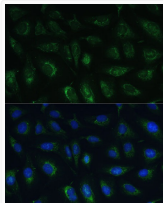
Clonality	Polyclonal
Concentration	Lot specific
Conjugation	Unconjugated
Purification	Affinity purification
Dilution Range	WB:1:500-1:2000 IF/CC:1:50-1:100 ELISA:Recommended starting concentration is 1 Mu g/mL. Please optimize the concentration based on your specific assay requirements.
Formulation	PBS with 0.01% Thimerosal, 50% Glycerol, pH 7.3.
Isotype	IgG
Molecular Weight	Protein Mw: 121kDa Observed Mw: 120kDa
Storage Instruction	Store at -20°C for up to 1 year from the date of receipt, and avoid repeat freeze-thaw cycles.

### TARGET INFORMATION

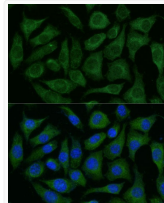
Gene ID	<a href="#">2889</a>
Gene Symbol	<a href="#">RAPGEF1</a>
UniProt ID	<a href="#">RPGF1_HUMAN</a>
Immunogen Region	844-1095
Immunogen Sequence	ARGVAARPGTLHDFHSHEIA EQLTLLDAELFYKIEIPEVL LWAKEQNEEKSPNLTQFTEH FNNMSYWVRSIMLQEKAQD RERLLKFKIKMKHLRKLNN FNSYLAILSALDSAPIRRLE WQKQTSEGLAEYCTLDSSS SFRAYRAALSEVEPPCIPYL GLILQDLTFVHLGNPDYIDG KVNFSKRWQQFNILDSMRCF QQAHYDMRRNDDIINFFNDF SDHLAEEALWELSLKIKPR
Specificity	Recombinant fusion protein containing a sequence corresponding to amino acids 844-1095 of human RAPGEF1 (NP_941372.1).

### ADDITIONAL INFORMATION

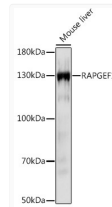
Note **STRICTLY FOR FURTHER SCIENTIFIC RESEARCH USE ONLY (RUO). MUST NOT TO BE USED IN DIAGNOSTIC OR THERAPEUTIC APPLICATIONS.**



Immunofluorescence analysis of U-2 OS cells using RAPGEF1 Rabbit polyclonal antibody (STJ118491) at dilution of 1:100 (40x lens). Secondary antibody: Cy3 Goat Anti-Rabbit IgG (H+L) at 1:500 dilution. Blue: DAPI for nuclear staining.



Immunofluorescence analysis of L929 cells using RAPGEF1 Rabbit polyclonal antibody (STJ118491) at dilution of 1:100 (40x lens). Secondary antibody: Cy3 Goat Anti-Rabbit IgG (H+L) at 1:500 dilution. Blue: DAPI for nuclear staining.



Western blot analysis of lysates from Mouse liver, using RAPGEF1 Rabbit polyclonal antibody (STJ118491) at 1:1000 dilution. Secondary antibody: HRP Goat Anti-Rabbit IgG (H+L) (STJS000856) at 1:10000 dilution. Lysates/proteins: 25 Mu g per lane. Blocking buffer: 3% nonfat dry milk in TBST. Detection: ECL Basic Kit. Exposure time: 30s.