

## Anti-CLNS1A antibody (1-237) (STJ118480)

### GENERAL INFORMATION

Product Type	Primary antibodies
Applications	WB/IHC-P/ELISA
Host / Source	Rabbit
Reactivity	Human/Mouse/Rat

### PRODUCT PROPERTIES

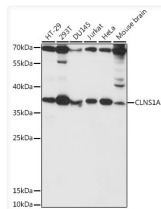
Clonality	Polyclonal
Concentration	Lot specific
Conjugation	Unconjugated
Purification	Affinity purification
Dilution Range	WB:1:500-1:2000 IHC-P:1:50-1:100 ELISA:Recommended starting concentration is 1 µg/mL. Please optimize the concentration based on your specific assay requirements.
Formulation	PBS with 0.01% Thimerosal, 50% Glycerol, pH 7.3.
Isotype	IgG
Molecular Weight	Protein Mw: 26kDa Observed Mw: 38kDa
Storage Instruction	Store at -20°C for up to 1 year from the date of receipt, and avoid repeat freeze-thaw cycles.

### TARGET INFORMATION

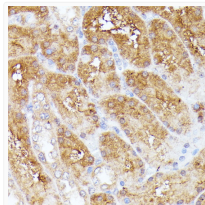
Gene ID	<a href="#">1207</a>
Gene Symbol	<a href="#">CLNS1A</a>
UniProt ID	<a href="#">ICLN_HUMAN</a>
Immunogen Region	1-237
Immunogen Sequence	MSFLKSFPPGPAEGLLRQQ PDTEAVLNGKGLGTGLTYIA ESRLSWLDGSGLGFSLEYPT ISLHALSRDRSDCLGEHLYV MVNAKFEEESKEPVADDEEEE DSDDDDVEPITFEFRVPSDKS ALEAMFTAMCECQALHPDPE DEDSDDYDGEEDVEAEHQG QGDIPTFYTYEEGLSHLTAE GQATLERLEGMLSQSVSSQY NMAGVVRTEDSIRDYEDGMEV DTTPTVAGQFEDADVHD
Specificity	Recombinant fusion protein containing a sequence corresponding to amino acids 1-237 of human CLNS1A (NP_001284.1).

### ADDITIONAL INFORMATION

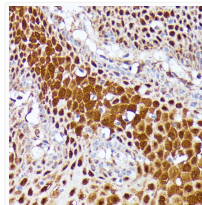
Note STRICTLY FOR FURTHER SCIENTIFIC RESEARCH USE ONLY (RUO). MUST NOT TO BE USED IN DIAGNOSTIC OR THERAPEUTIC APPLICATIONS.



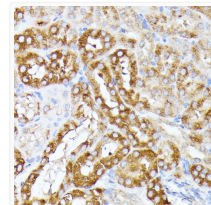
Western blot analysis of extracts of various cell lines, using CLNS1A antibody (STJ118480) at 1:1000 dilution. Secondary antibody: HRP Goat Anti-rabbit IgG (H+L) (STJS000856) at 1:10000 dilution. Lysates/proteins: 25 µg per lane. Blocking buffer: 3% non-fat dry milk in TBST. Detection: ECL Basic Kit. Exposure time: 5s.



Immunohistochemistry analysis of paraffin-embedded rat kidney using CLNS1A antibody (STJ118480) at dilution of 1:100 (40x lens). Perform microwave antigen retrieval with 10 mM PBS buffer pH 7. 2 before commencing with immunohistochemistry staining protocol.



Immunohistochemistry analysis of paraffin-embedded human esophageal using CLNS1A antibody (STJ118480) at dilution of 1:100 (40x lens). Perform microwave antigen retrieval with 10 mM PBS buffer pH 7. 2 before commencing with immunohistochemistry staining protocol.



Immunohistochemistry analysis of paraffin-embedded mouse kidney using CLNS1A antibody (STJ118480) at dilution of 1:100 (40x lens). Perform microwave antigen retrieval with 10 mM PBS buffer pH 7. 2 before commencing with immunohistochemistry staining protocol.