

Anti-NOD2 antibody (30-1040) (STJ118437)

GENERAL INFORMATION

Product Type	Primary antibodies
Applications	WB/IHC-P/IF/ICC/ELISA
Host / Source	Rabbit
Reactivity	Human/Mouse/Rat

PRODUCT PROPERTIES

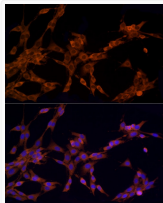
Clonality	Polyclonal
Concentration	Lot specific
Conjugation	Unconjugated
Purification	Affinity purification
Dilution Range	WB:1:500-1:2000 IHC-P:1:50-1:200 IF/CC:1:50-1:200 ELISA:Recommended starting concentration is 1 µg/mL. Please optimize the concentration based on your specific assay requirements.
Formulation	PBS with 0.05% Proclin300, 50% Glycerol, pH 7.3.
Isotype	IgG
Molecular Weight	Protein Mw: 115kDa Observed Mw: 100kDa
Storage Instruction	Store at -20°C for up to 1 year from the date of receipt, and avoid repeat freeze-thaw cycles.

TARGET INFORMATION

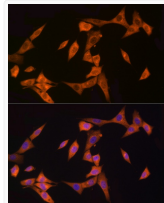
Gene ID	64127
Gene Symbol	NOD2
UniProt ID	NOD2_HUMAN
Immunogen Region	30-1040
Immunogen Sequence	SQEAFAQRSQQLVELLVSGS LEGFESVLDWLLSWEVLSWE DYEGFHLLGQPLSHLARLL DTVWNKGTWACQKLIAAAE AQADSQSPKLHGCWDPHSLH PARDLQSHRPAIVRRLLHSHV ENMLDLAWERGFVSQYECDE IRLPIFTPSQRARRLLDLAT VKANGLAAFLQHVQELPVP LALPLEA
Specificity	Recombinant fusion protein containing a sequence corresponding to amino acids 30-216 of human NOD2 (NP_071445.1).

ADDITIONAL INFORMATION

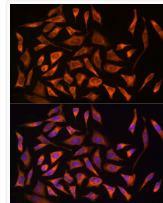
Note **STRICTLY FOR FURTHER SCIENTIFIC RESEARCH USE ONLY (RUO). MUST NOT TO BE USED IN DIAGNOSTIC OR THERAPEUTIC APPLICATIONS.**



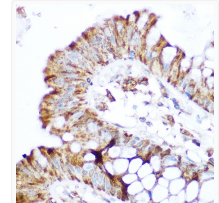
Immunofluorescence analysis of PC-12 cells using NOD2 Rabbit polyclonal antibody (STJ118437) at dilution of 1:100 (40x lens). Secondary antibody: Cy3 Goat Anti-Rabbit IgG (H+L) at 1:500 dilution. Blue: DAPI for nuclear staining.



Immunofluorescence analysis of NIH/3T3 cells using NOD2 Rabbit polyclonal antibody (STJ118437) at dilution of 1:100 (40x lens). Secondary antibody: Cy3 Goat Anti-Rabbit IgG (H+L) at 1:500 dilution. Blue: DAPI for nuclear staining.



Immunofluorescence analysis of HeLa cells using NOD2 Rabbit polyclonal antibody (STJ118437) at dilution of 1:100 (40x lens). Secondary antibody: Cy3 Goat Anti-Rabbit IgG (H+L) at 1:500 dilution. Blue: DAPI for nuclear staining.



Immunohistochemistry analysis of NOD2 in paraffin-embedded human colon using NOD2 Rabbit polyclonal antibody (STJ118437) at dilution of 1:100 (40x lens). Perform microwave antigen retrieval with 10 mM Tris/EDTA buffer pH 9.0 before commencing with immunohistochemistry staining protocol.