

Anti-NLRP10 antibody (1-300) (STJ118421)

GENERAL INFORMATION

Product Type	Primary antibodies
Applications	WB/ELISA
Host / Source	Rabbit
Reactivity	Human/Mouse/Rat

PRODUCT PROPERTIES

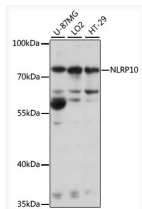
Clonality	Polyclonal
Concentration	Lot specific
Conjugation	Unconjugated
Purification	Affinity purification
Dilution Range	WB:1:500-1:2000 ELISA:Recommended starting concentration is 1 Mu g/mL. Please optimize the concentration based on your specific assay requirements.
Formulation	PBS with 0.01% Thimerosal, 50% Glycerol, pH 7.3.
Isotype	IgG
Molecular Weight	Protein Mw: 75kDa Observed Mw: 75kDa
Storage Instruction	Store at -20°C for up to 1 year from the date of receipt, and avoid repeat freeze-thaw cycles.

TARGET INFORMATION

Gene ID	338322
Gene Symbol	NLRP10
UniProt ID	NAL10_HUMAN
Immunogen Region	1-300
Immunogen Sequence	MAMAKARKPREALLWALS DL EENDFKLKFYLRD MTLSEG QPPLARGELEGLIPVDLAEL LISKYGEKEAVKVV LKGLKV MNLLELVDQLSHICLHDYRE VYREHVRCL EEWQEAGVNGR YNQVLLVAKPSESPE SLAC PFPEQELESVTVEALFDSGE KPSLAPSLVVLQGSAGTGKT TLARKMVL DWATG TLYPGRF DYVFYVSCKEVLLLESKLE QLLFWCCGD NQAPVTEILR
Specificity	Recombinant fusion protein containing a sequence corresponding to amino acids 1-300 of human NLRP10 (NP_789791.1).

ADDITIONAL INFORMATION

Note STRICTLY FOR FURTHER SCIENTIFIC RESEARCH USE ONLY (RUO). MUST NOT TO BE USED IN DIAGNOSTIC OR THERAPEUTIC APPLICATIONS.



Western blot analysis of various lysates using NLRP10 Rabbit polyclonal antibody (STJ118421) at 1:1000 dilution. Secondary antibody: HRP Goat Anti-Rabbit IgG (H+L) (STJS000856) at 1:10000 dilution. Lysates/proteins: 25 Mu g per lane. Blocking buffer: 3% nonfat dry milk in TBST. Detection: ECL Basic Kit. Exposure time: 10s.