

Anti-C9orf72 antibody (9-200) (STJ118415)

GENERAL INFORMATION

Product Type	Primary antibodies
Applications	WB/IHC-P/IF/ICC/ELISA
Host / Source	Rabbit
Reactivity	Human/Mouse/Rat

PRODUCT PROPERTIES

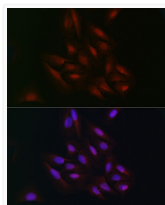
Clonality	Polyclonal
Concentration	Lot specific
Conjugation	Unconjugated
Purification	Affinity purification
Dilution Range	WB:1:500-1:1000 IHC-P:1:50-1:200 IF/CC:1:50-1:200 ELISA:Recommended starting concentration is 1 Mu g/mL. Please optimize the concentration based on your specific assay requirements.
Formulation	PBS with 0.01% Thimerosal, 50% Glycerol, pH 7.3.
Isotype	IgG
Molecular Weight	Protein Mw: 54kDa Observed Mw: 50kDa
Storage Instruction	Store at -20°C for up to 1 year from the date of receipt, and avoid repeat freeze-thaw cycles.

TARGET INFORMATION

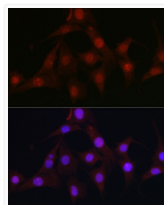
Gene ID	203228
Gene Symbol	C9orf72
UniProt ID	C1072_HUMAN
Immunogen Region	9-200
Immunogen Sequence	SPAVAKTEIALSGKSPLLAA TFAYWDNILGPRVRIHWAPK TEQVLLSDGEITFLANHTLN GEILRNAESGAIDVKFFVLS EKGVIIVSLIFDGNWNGDRS TYGLSIIPLQTELSFYLP RVCVDRDLTHIIRKGRIMMHK ERQENVQKILEGTERMEDQ GQSIIPMLTGEVIPVLELLS SMKSHSVPEEID
Specificity	Recombinant fusion protein containing a sequence corresponding to amino acids 9-200 of human C9orf72 (NP_001242983.1).

ADDITIONAL INFORMATION

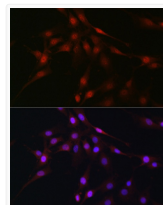
Note **STRICTLY FOR FURTHER SCIENTIFIC RESEARCH USE ONLY (RUO). MUST NOT TO BE USED IN DIAGNOSTIC OR THERAPEUTIC APPLICATIONS.**



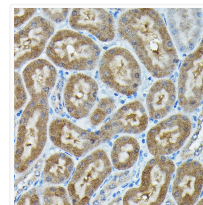
Immunofluorescence analysis of U2OS cells using C9orf72 Rabbit polyclonal antibody (STJ118415) at dilution of 1:100 (40x lens). Secondary antibody: Cy3 Goat Anti-Rabbit IgG (H+L) at 1:500 dilution. Blue: DAPI for nuclear staining.



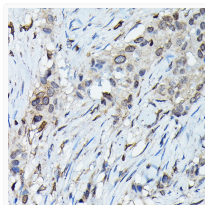
Immunofluorescence analysis of NIH/3T3 cells using C9orf72 Rabbit polyclonal antibody (STJ118415) at dilution of 1:100 (40x lens). Secondary antibody: Cy3 Goat Anti-Rabbit IgG (H+L) at 1:500 dilution. Blue: DAPI for nuclear staining.



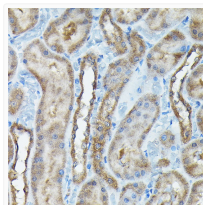
Immunofluorescence analysis of C6 cells using C9orf72 Rabbit polyclonal antibody (STJ118415) at dilution of 1:100 (40x lens). Secondary antibody: Cy3 Goat Anti-Rabbit IgG (H+L) at 1:500 dilution. Blue: DAPI for nuclear staining.



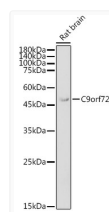
Immunohistochemistry analysis of C9orf72 in paraffin-embedded mouse kidney using C9orf72 Rabbit polyclonal antibody (STJ118415) at dilution of 1:100 (40x lens). Perform high pressure antigen retrieval with 10 mM citrate buffer pH 6.0 before commencing with immunohistochemistry staining protocol.



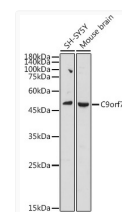
Immunohistochemistry analysis of C9orf72 in paraffin-embedded human esophageal cancer using C9orf72 Rabbit polyclonal antibody (STJ118415) at dilution of 1:100 (40x lens). Perform high pressure antigen retrieval with 10 mM citrate buffer pH 6.0 before commencing with immunohistochemistry staining protocol.



Immunohistochemistry analysis of C9orf72 in paraffin-embedded rat kidney using C9orf72 Rabbit polyclonal antibody (STJ118415) at dilution of 1:100 (40x lens). Perform high pressure antigen retrieval with 10 mM citrate buffer pH 6.0 before commencing with immunohistochemistry staining protocol.



Western blot analysis of lysates from Rat brain, using C9orf72 Rabbit polyclonal antibody (STJ118415) at 1:1000 dilution. Secondary antibody: HRP Goat Anti-Rabbit IgG (H+L) (STJS000856) at 1:10000 dilution. Lysates/proteins: 25 Mu g per lane. Blocking buffer: 3% nonfat dry milk in TBST. Detection: ECL Basic Kit. Exposure time: 180s.



Western blot analysis of various lysates using C9orf72 Rabbit polyclonal antibody (STJ118415) at 1:1000 dilution. Secondary antibody: HRP Goat Anti-Rabbit IgG (H+L) (STJS000856) at 1:10000 dilution. Lysates/proteins: 25 Mu g per lane. Blocking buffer: 3% nonfat dry milk in TBST. Detection: ECL Basic Kit. Exposure time: 90s.