

Anti-TRIM60 antibody (1-300) (STJ118408)

GENERAL INFORMATION

Product Type	Primary antibodies
Applications	WB/ELISA
Host / Source	Rabbit
Reactivity	Mouse

PRODUCT PROPERTIES

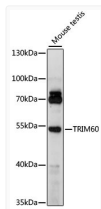
Clonality	Polyclonal
Concentration	Lot specific
Conjugation	Unconjugated
Purification	Affinity purification
Dilution Range	WB:1:500-1:2000 ELISA:Recommended starting concentration is 1 µg/mL. Please optimize the concentration based on your specific assay requirements.
Formulation	PBS with 0.01% Thimerosal, 50% Glycerol, pH 7.3.
Isotype	IgG
Molecular Weight	Protein Mw: 55kDa Observed Mw: 55kDa
Storage Instruction	Store at -20°C for up to 1 year from the date of receipt, and avoid repeat freeze-thaw cycles.

TARGET INFORMATION

Gene ID	166655
Gene Symbol	TRIM60
UniProt ID	TRI60_HUMAN
Immunogen Region	1-300
Immunogen Sequence	MEFVTALVNLQEESSCPICL EYLKDPVTINC GHNF CRSCL SVSWKDLDDTFFPCPVCRCFCF PYKSFRRNPQLRNLTEIAKQ LQIRRSKRKRQKENAMCEKH NQFLTLFCVKDLEILCTQCS FSTKHQKH YICPIKKA SYH REILEGSLPLRNNIERVEK VILQGSKSVELKKKVEYKR EEINSEFEQIRLFLQNEQEM ILRQIQDEEMNILAKLNENL VELSDYVSTLKHLLREVEG
Specificity	Recombinant fusion protein containing a sequence corresponding to amino acids 1-300 of human TRIM60 (NP_689833.1).

ADDITIONAL INFORMATION

Note STRICTLY FOR FURTHER SCIENTIFIC RESEARCH USE ONLY (RUO). MUST NOT TO BE USED IN DIAGNOSTIC OR THERAPEUTIC APPLICATIONS.



Western blot analysis of lysates from mouse testis, using TRIM60 Rabbit polyclonal antibody (STJ118408) at 1000 dilution. Secondary antibody: HRP Goat Anti-Rabbit IgG (H+L) (STJS000856) at 1:10000 dilution. Lysates/proteins: 25 µg per lane. Blocking buffer: 3% nonfat dry milk in TBST. Detection: ECL Basic Kit. Exposure time: 90s.