

Anti-SSC4D antibody (446-575) (STJ118402)

GENERAL INFORMATION

Product Type	Primary antibodies
Applications	WB/ELISA
Host / Source	Rabbit
Reactivity	Human/Mouse/Rat

PRODUCT PROPERTIES

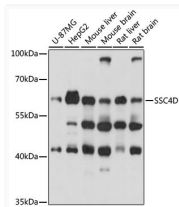
Clonality	Polyclonal
Concentration	Lot specific
Conjugation	Unconjugated
Purification	Affinity purification
Dilution Range	WB:1:500-1:2000 ELISA:Recommended starting concentration is 1 Mu g/mL. Please optimize the concentration based on your specific assay requirements.
Formulation	PBS with 0.01% Thimerosal, 50% Glycerol, pH 7.3.
Isotype	IgG
Molecular Weight	Protein Mw: 61kDa Observed Mw: 61kDa
Storage Instruction	Store at -20°C for up to 1 year from the date of receipt, and avoid repeat freeze-thaw cycles.

TARGET INFORMATION

Gene ID	136853
Gene Symbol	SSC4D
UniProt ID	SRB4D_HUMAN
Immunogen Region	446-575
Immunogen Sequence	PEELGLVQQDQSGSETTRVPT PRPRDGHRLVNGAHRCEGR VELYLQQRWGTVCDDAWDLR AAGVLCRQLGCGQALAAPGE AHFGPGRGPILLDNVKCRGE ESALLCISHIRWDAHNCDS EDASVLCQPS
Specificity	Recombinant fusion protein containing a sequence corresponding to amino acids 446-575 of human SSC4D (NP_542782.1).

ADDITIONAL INFORMATION

Note STRICTLY FOR FURTHER SCIENTIFIC RESEARCH USE ONLY (RUO). MUST NOT TO BE USED IN DIAGNOSTIC OR THERAPEUTIC APPLICATIONS.



Western blot analysis of various lysates using SSC4D Rabbit polyclonal antibody (STJ118402) at 1000 dilution. Secondary antibody: HRP Goat Anti-Rabbit IgG (H+L) (STJS000856) at 1:10000 dilution. Lysates/proteins: 25 Mu g per lane. Blocking buffer: 3% nonfat dry milk in TBST. Detection: ECL Basic Kit. Exposure time: 10s.