

## Anti-LSM12 antibody (1-195) (STJ118392)

### GENERAL INFORMATION

Product Type	Primary antibodies
Applications	WB/ELISA
Host / Source	Rabbit
Reactivity	Human/Mouse

### PRODUCT PROPERTIES

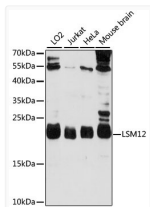
Clonality	Polyclonal
Concentration	Lot specific
Conjugation	Unconjugated
Purification	Affinity purification
Dilution Range	WB:1:500-1:2000 ELISA:Recommended starting concentration is 1 Mu g/mL. Please optimize the concentration based on your specific assay requirements.
Formulation	PBS with 0.01% Thimerosal, 50% Glycerol, pH 7.3.
Isotype	IgG
Molecular Weight	Protein Mw: 22kDa Observed Mw: 22kDa
Storage Instruction	Store at -20°C for up to 1 year from the date of receipt, and avoid repeat freeze-thaw cycles.

### TARGET INFORMATION

Gene ID	<a href="#">124801</a>
Gene Symbol	<a href="#">LSM12</a>
UniProt ID	<a href="#">LSM12_HUMAN</a>
Immunogen Region	1-195
Immunogen Sequence	MAAPPGEYFVSGVQVSCRTC QEORLQGEVVAFDYQSKMLA LKCPSSSGKPNHADILLINL QYVSEVEIINDRTETPPPLA SLNVSKLASKARTEKEEELS QAYAISAGVSLEGQQLFQTI HKTIKDCKWQEKNIIVMEEV VITPPYQVENCKGKEGSALS HVRKIVEKHFRDVESQKILQ RSQAQQPQKEAALSS
Specificity	Recombinant fusion protein containing a sequence corresponding to amino acids 1-195 of human LSM12 (NP_689557.1).

### ADDITIONAL INFORMATION

Note **STRICTLY FOR FURTHER SCIENTIFIC RESEARCH USE ONLY (RUO). MUST NOT TO BE USED IN DIAGNOSTIC OR THERAPEUTIC APPLICATIONS.**



Western blot analysis of various lysates using LSM12 Rabbit polyclonal antibody (STJ118392) at 1000 dilution. Secondary antibody: HRP Goat Anti-Rabbit IgG (H+L) (STJS000856) at 1:10000 dilution. Lysates/proteins: 25 Mu g per lane. Blocking buffer: 3% nonfat dry milk in TBST. Detection: ECL Basic Kit. Exposure time: 60s.