

## Anti-MVB12A antibody (1-273) (STJ118378)

### GENERAL INFORMATION

Product Type	Primary antibodies
Applications	WB/ELISA
Host / Source	Rabbit
Reactivity	Rat

### PRODUCT PROPERTIES

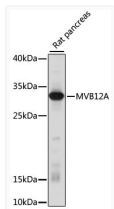
Clonality	Polyclonal
Concentration	Lot specific
Conjugation	Unconjugated
Purification	Affinity purification
Dilution Range	WB:1:500-1:2000 ELISA:Recommended starting concentration is 1 Mu g/mL. Please optimize the concentration based on your specific assay requirements.
Formulation	PBS with 0.01% Thimerosal, 50% Glycerol, pH 7.3.
Isotype	IgG
Molecular Weight	Protein Mw: 29kDa Observed Mw: 29kDa
Storage Instruction	Store at -20°C for up to 1 year from the date of receipt, and avoid repeat freeze-thaw cycles.

### TARGET INFORMATION

Gene ID	<a href="#">93343</a>
Gene Symbol	<a href="#">MVB12A</a>
UniProt ID	<a href="#">MB12A_HUMAN</a>
Immunogen Region	1-273
Immunogen Sequence	MDPVPGTDSAPLAGLAWSSA SAPPFRGFSAISCTVEGAPA SFGKSFQAQKSGYFLCLSSLG SLENPQENVVADIQIVVDKS PLPLGFSPVCDPMDSKASVS KKKRMCVKLLPLGATDTAVF DVRLSGKTKTVPGYLRIGDM GGFAIWCKKAKAPRPVPKPR GLSRDMQGLSLDASQPSKG GLLERTASRLGSRASTLRRN DSIYEASSLYGISAMDGVPF TLHPRFEGKSCSPLAFSAF
Specificity	Recombinant fusion protein containing a sequence corresponding to amino acids 1-273 of human MVB12A (NP_612410.1).

### ADDITIONAL INFORMATION

Note **STRICTLY FOR FURTHER SCIENTIFIC RESEARCH USE ONLY (RUO). MUST NOT TO BE USED IN DIAGNOSTIC OR THERAPEUTIC APPLICATIONS.**



Western blot analysis of lysates from rat pancreas, using MVB12A Rabbit polyclonal antibody (STJ118378) at 1000 dilution. Secondary antibody: HRP Goat Anti-Rabbit IgG (H+L) (STJS000856) at 1:10000 dilution. Lysates/proteins: 25 Mu g per lane. Blocking buffer: 3% nonfat dry milk in TBST. Detection: ECL Enhanced Kit. Exposure time: 10s.