

Anti-ARMC6 antibody (1-220) (STJ118376)

GENERAL INFORMATION

Product Type	Primary antibodies
Applications	WB/IF/ICC/ELISA
Host / Source	Rabbit
Reactivity	Human/Mouse/Rat

PRODUCT PROPERTIES

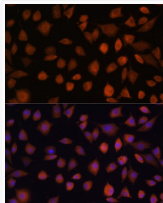
Clonality	Polyclonal
Concentration	Lot specific
Conjugation	Unconjugated
Purification	Affinity purification
Dilution Range	WB:1:500-1:2000 IF/CC:1:50-1:200 ELISA:Recommended starting concentration is 1 μ g/mL. Please optimize the concentration based on your specific assay requirements.
Formulation	PBS with 0.01% Thimerosal, 50% Glycerol, pH 7.3.
Isotype	IgG
Molecular Weight	Protein Mw: 54kDa Observed Mw: 54kDa
Storage Instruction	Store at -20°C for up to 1 year from the date of receipt, and avoid repeat freeze-thaw cycles.

TARGET INFORMATION

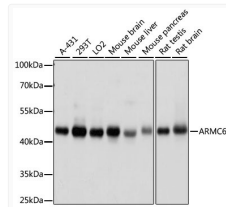
Gene ID	93436
Gene Symbol	ARMC6
UniProt ID	ARMC6_HUMAN
Immunogen Region	1-220
Immunogen Sequence	MSERCCSRYSSGASIGCTPT STQAKMVSKRIAQETFDAAV RENIEEFAMGPPEEAVKEAVE QFESQGVLDLSNIVKTPKVS ADGSQEPHTDILQMLSDLQE SVASSRPQEVSAYLTRFCDQ CKQDKACRFLAAQKQAYPII FTAWKLATAGDQGLLQSLN ALSVLTDGGQPDLLDAQGLQL LVATLTQNADEADLTCSGIR CVRHACLKHEQNRQDLVKAG
Specificity	Recombinant fusion protein containing a sequence corresponding to amino acids 1-220 of human ARMC6 (NP_001186125.1).

ADDITIONAL INFORMATION

Note STRICTLY FOR FURTHER SCIENTIFIC RESEARCH USE ONLY (RUO). MUST NOT TO BE USED IN DIAGNOSTIC OR THERAPEUTIC APPLICATIONS.



Immunofluorescence analysis of L929 cells using ARMC6 Rabbit polyclonal antibody (STJ118376) at dilution of 1:100. Secondary antibody: Cy3 Goat Anti-Rabbit IgG (H+L) at 1:500 dilution. Blue: DAPI for nuclear staining.



Western blot analysis of various lysates using ARMC6 Rabbit polyclonal antibody (STJ118376) at 1000 dilution. Secondary antibody: HRP Goat Anti-Rabbit IgG (H+L) (STJS000856) at 1:10000 dilution. Lysates/proteins: 25 μ g per lane. Blocking buffer: 3% nonfat dry milk in TBST. Detection: ECL Basic Kit. Exposure time: 10s.