

## Anti-ITFG1 antibody (313-612) (STJ118346)

### GENERAL INFORMATION

Product Type	Primary antibodies
Applications	WB/ELISA
Host / Source	Rabbit
Reactivity	Human/Mouse/Rat

### PRODUCT PROPERTIES

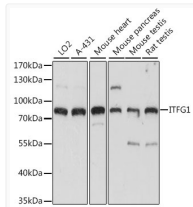
Clonality	Polyclonal
Concentration	Lot specific
Conjugation	Unconjugated
Purification	Affinity purification
Dilution Range	WB:1:500-1:2000 ELISA:Recommended starting concentration is 1 µg/mL. Please optimize the concentration based on your specific assay requirements.
Formulation	PBS with 0.01% Thimerosal, 50% Glycerol, pH 7.3.
Isotype	IgG
Molecular Weight	Protein Mw: 68kDa Observed Mw: 80kDa
Storage Instruction	Store at -20°C for up to 1 year from the date of receipt, and avoid repeat freeze-thaw cycles.

### TARGET INFORMATION

Gene ID	<a href="#">81533</a>
Gene Symbol	<a href="#">ITFG1</a>
UniProt ID	<a href="#">TIP_HUMAN</a>
Immunogen Region	313-612
Immunogen Sequence	LWGFVPFVDEQQPTEIPIPI TLHIGDYNMDGYPDALVILK NTSGSNQQAFLENVPCNNA SCEEARRMFKVYWELTDLNQ IKDAMVATFFDIYEDGILDI VVLSKGYTKNDFAIHTLKNK FEADAYFVKVIVLSGLCSND CPRKITPFGVNPQPGPYIMYT TVDANGYLKNGSAGQLSQSA HLALQLPYNVVLGLGRSANFL DHLVYGVIPRPSGKESIRKQE WTAIIPNSQLIVIPYHNV
Specificity	Recombinant fusion protein containing a sequence corresponding to amino acids 313-612 of human ITFG1 (NP_110417.2).

### ADDITIONAL INFORMATION

Note **STRICTLY FOR FURTHER SCIENTIFIC RESEARCH USE ONLY (RUO). MUST NOT TO BE USED IN DIAGNOSTIC OR THERAPEUTIC APPLICATIONS.**



Western blot analysis of various lysates using ITFG1 Rabbit polyclonal antibody (STJ118346) at 1:1000 dilution. Secondary antibody: HRP Goat Anti-Rabbit IgG (H+L) (STJS000856) at 1:10000 dilution. Lysates/proteins: 25 µg per lane. Blocking buffer: 3% nonfat dry milk in TBST. Detection: ECL Basic Kit. Exposure time: 3s.