

Anti-CERK antibody (C-Term) (STJ118334)

GENERAL INFORMATION

Product Type	Primary antibodies
Applications	WB/ELISA
Host / Source	Rabbit
Reactivity	Human/Mouse/Rat

PRODUCT PROPERTIES

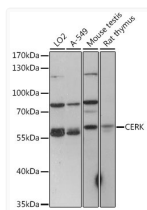
Clonality	Polyclonal
Concentration	Lot specific
Conjugation	Unconjugated
Purification	Affinity purification
Dilution Range	WB:1:500-1:2000 ELISA:Recommended starting concentration is 1 μ g/mL. Please optimize the concentration based on your specific assay requirements.
Formulation	PBS with 0.01% Thimerosal, 50% Glycerol, pH 7.3.
Isotype	IgG
Molecular Weight	Protein Mw: 60kDa Observed Mw: 60kDa
Storage Instruction	Store at -20°C for up to 1 year from the date of receipt, and avoid repeat freeze-thaw cycles.

TARGET INFORMATION

Gene ID	64781
Gene Symbol	CERK
UniProt ID	CERK1_HUMAN
Immunogen Region	C-Term
Immunogen Sequence	CRRSPRGLSPA AHLGDGSSD LILIRKCSR FNFLRFLIRHT NQQDQDFDFVEVYRVK KFKQ FTSKHMEDESDLKEGGKKR FGHICSSHPSCCCTVSNSSW NCDGEVLHSPAIEV RVHCQL VRLFARGIEENPKPDSHS
Specificity	A synthetic peptide corresponding to a sequence within amino acids 400 to the C-terminus of human CERK (NP_073603.2).

ADDITIONAL INFORMATION

Note STRICTLY FOR FURTHER SCIENTIFIC RESEARCH USE ONLY (RUO). MUST NOT TO BE USED IN DIAGNOSTIC OR THERAPEUTIC APPLICATIONS.



Western blot analysis of various lysates using CERK Rabbit polyclonal antibody (STJ118334) at 1:1000 dilution. Secondary antibody: HRP Goat Anti-Rabbit IgG (H+L) (STJS000856) at 1:10000 dilution. Lysates/proteins: 25 μ g per lane. Blocking buffer: 3% nonfat dry milk in TBST. Detection: ECL Basic Kit. Exposure time: 60s.