

Anti-ZFP64 antibody (1-170) (STJ118308)

GENERAL INFORMATION

Product Type	Primary antibodies
Applications	WB/ELISA
Host / Source	Rabbit
Reactivity	Human/Mouse

PRODUCT PROPERTIES

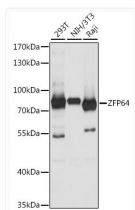
Clonality	Polyclonal
Concentration	Lot specific
Conjugation	Unconjugated
Purification	Affinity purification
Dilution Range	WB:1:500-1:2000 ELISA:Recommended starting concentration is 1 μ g/mL. Please optimize the concentration based on your specific assay requirements.
Formulation	PBS with 0.01% Thimerosal, 50% Glycerol, pH 7.3.
Isotype	IgG
Molecular Weight	Protein Mw: 46kDa/48kDa/68kDa/72kDa/74kDa Observed Mw: 75kDa
Storage Instruction	Store at -20°C for up to 1 year from the date of receipt, and avoid repeat freeze-thaw cycles.

TARGET INFORMATION

Gene ID	55734
Gene Symbol	ZFP64
UniProt ID	ZF64B_HUMAN
Immunogen Region	1-170
Immunogen Sequence	MNASSEGESFAGSVQIPGGT TVLVELTPDIHICGICKQQF NNLDAFVAHKQSGCQLTGTS AAPSTVQFVSEETVPATQT QTTTRTITSETQTITVSAPE FVFEHGYQTYLPTESNENQT ATVISLPAKSRTKKPTTPPA QKRLNCCYPGCQFKTAYGMK DMRHLKIHT
Specificity	Recombinant fusion protein containing a sequence corresponding to amino acids 1-170 of human ZFP64 (NP_060667.2).

ADDITIONAL INFORMATION

Note STRICTLY FOR FURTHER SCIENTIFIC RESEARCH USE ONLY (RUO). MUST NOT TO BE USED IN DIAGNOSTIC OR THERAPEUTIC APPLICATIONS.



Western blot analysis of various lysates using ZFP64 Rabbit polyclonal antibody (STJ118308) at 1:1000 dilution. Secondary antibody: HRP Goat Anti-Rabbit IgG (H+L) (STJS000856) at 1:10000 dilution. Lysates/proteins: 25 μ g per lane. Blocking buffer: 3% nonfat dry milk in TBST. Detection: ECL Basic Kit. Exposure time: 10s.