

Anti-COPG2 antibody (542-871) (STJ118261)

GENERAL INFORMATION

Product Type	Primary antibodies
Applications	WB/IHC-P/IF/ICC/ELISA
Host / Source	Rabbit
Reactivity	Human/Mouse/Rat

PRODUCT PROPERTIES

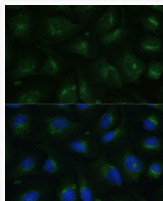
Clonality	Polyclonal
Concentration	Lot specific
Conjugation	Unconjugated
Purification	Affinity purification
Dilution Range	WB:1:500-1:2000 IHC-P:1:50-1:100 IF/CC:1:50-1:100 ELISA:Recommended starting concentration is 1 µg/mL. Please optimize the concentration based on your specific assay requirements.
Formulation	PBS with 0.01% Thimerosal, 50% Glycerol, pH 7.3.
Isotype	IgG
Molecular Weight	Protein Mw: 98kDa Observed Mw: 105kDa
Storage Instruction	Store at -20°C for up to 1 year from the date of receipt, and avoid repeat freeze-thaw cycles.

TARGET INFORMATION

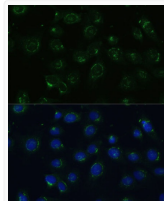
Gene ID	26958
Gene Symbol	COPG2
UniProt ID	COPG2_HUMAN
Immunogen Region	542-871
Immunogen Sequence	LNATYIFNGLTVSVPGMEKA LHQYTLPESEKPFDMKSIPL AMAPVFEQKAEITLVATKPE KLAPSRQDIFQEQLAIAPEF LNIGPLFKSSEPVLQTEAET EYFVRCIKHMFTNHIVFQFD CTNTLNDQLLEKVTVMQMEPS DSYEVLSCIPAPSLPYNQPG ICYTLVRLPDDDDPTAVAGSF SCTMKFTVRDCDPNTGVPDE DGYDDEYVLEDLEVTVSDHI QKVLKPNFAAAWEEVGDTF
Specificity	Recombinant fusion protein containing a sequence corresponding to amino acids 542-871 of human COPG2 (NP_036265.3).

ADDITIONAL INFORMATION

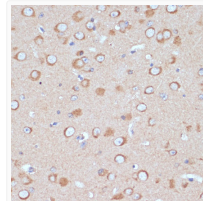
Note **STRICTLY FOR FURTHER SCIENTIFIC RESEARCH USE ONLY (RUO). MUST NOT TO BE USED IN DIAGNOSTIC OR THERAPEUTIC APPLICATIONS.**



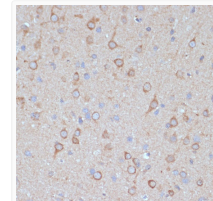
Immunofluorescence analysis of U-2 OS cells using COPG2 Rabbit polyclonal antibody (STJ118261) at dilution of 1:100 (40x lens). Secondary antibody: Cy3 Goat Anti-Rabbit IgG (H+L) at 1:500 dilution. Blue: DAPI for nuclear staining.



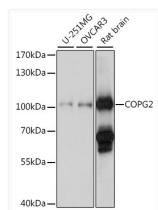
Immunofluorescence analysis of C6 cells using COPG2 Rabbit polyclonal antibody (STJ118261) at dilution of 1:100 (40x lens). Secondary antibody: Cy3 Goat Anti-Rabbit IgG (H+L) at 1:500 dilution. Blue: DAPI for nuclear staining.



Immunohistochemistry analysis of COPG2 in paraffin-embedded mouse brain using COPG2 Rabbit polyclonal antibody (STJ118261) at dilution of 1:100 (40x lens). Perform microwave antigen retrieval with 10 mM PBS buffer pH 7.2 before commencing with immunohistochemistry staining protocol.



Immunohistochemistry analysis of COPG2 in paraffin-embedded rat brain using COPG2 Rabbit polyclonal antibody (STJ118261) at dilution of 1:100 (40x lens). Perform microwave antigen retrieval with 10 mM PBS buffer pH 7.2 before commencing with immunohistochemistry staining protocol.



Western blot analysis of various lysates using COPG2 Rabbit polyclonal antibody (STJ118261) at 1:1000 dilution. Secondary antibody: HRP Goat Anti-Rabbit IgG (H+L) (STJS000856) at 1:10000 dilution. Lysates/proteins: 25 µg per lane. Blocking buffer: 3% nonfat dry milk in TBST. Detection: ECL Basic Kit. Exposure time: 90s.