

## Anti-TIMM8B antibody (16-98) (STJ118259)

### GENERAL INFORMATION

Product Type	Primary antibodies
Applications	WB/IHC-P/IF/ICC/ELISA
Host / Source	Rabbit
Reactivity	Human/Mouse/Rat

### PRODUCT PROPERTIES

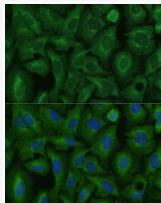
Clonality	Polyclonal
Concentration	Lot specific
Conjugation	Unconjugated
Purification	Affinity purification
Dilution Range	WB:1:500-1:2000 IHC-P:1:50-1:100 IF/CC:1:50-1:100 ELISA:Recommended starting concentration is 1 µg/mL. Please optimize the concentration based on your specific assay requirements.
Formulation	PBS with 0.01% Thimerosal, 50% Glycerol, pH 7.3.
Isotype	IgG
Molecular Weight	Protein Mw: 9kDa Observed Mw: 12kDa
Storage Instruction	Store at -20°C for up to 1 year from the date of receipt, and avoid repeat freeze-thaw cycles.

### TARGET INFORMATION

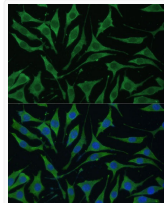
Gene ID	<a href="#">26521</a>
Gene Symbol	<a href="#">TIMM8B</a>
UniProt ID	<a href="#">TIM8B_HUMAN</a>
Immunogen Region	16-98
Immunogen Sequence	MAELGEADEAELQRLVAAEQ KQAQFTAQVHHFMELCWDKC VEKPGNRLDSRTENCLSSCV DRFIDTTLAITSRFAQIVQK GGG
Specificity	Recombinant fusion protein containing a sequence corresponding to amino acids 16-98 of human TIMM8B (NP_036591.1).

### ADDITIONAL INFORMATION

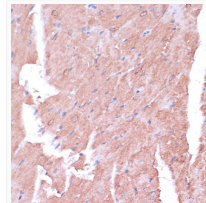
Note **STRICTLY FOR FURTHER SCIENTIFIC RESEARCH USE ONLY (RUO). MUST NOT TO BE USED IN DIAGNOSTIC OR THERAPEUTIC APPLICATIONS.**



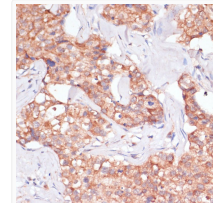
Immunofluorescence analysis of U-2 OS cells using TIMM8B Rabbit polyclonal antibody (STJ118259) at dilution of 1:100 (40x lens). Secondary antibody: Cy3 Goat Anti-Rabbit IgG (H+L) at 1:500 dilution. Blue: DAPI for nuclear staining.



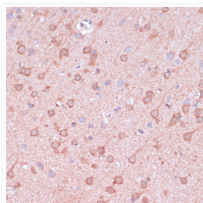
Immunofluorescence analysis of L929 cells using TIMM8B Rabbit polyclonal antibody (STJ118259) at dilution of 1:100 (40x lens). Secondary antibody: Cy3 Goat Anti-Rabbit IgG (H+L) at 1:500 dilution. Blue: DAPI for nuclear staining.



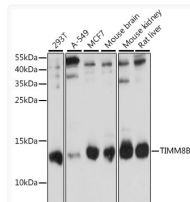
Immunohistochemistry analysis of TIMM8B in paraffin-embedded mouse heart using TIMM8B Rabbit polyclonal antibody (STJ118259) at dilution of 1:100 (40x lens). Perform microwave antigen retrieval with 10 mM PBS buffer pH 7.2 before commencing with immunohistochemistry staining protocol.



Immunohistochemistry analysis of TIMM8B in paraffin-embedded human breast cancer using TIMM8B Rabbit polyclonal antibody (STJ118259) at dilution of 1:100 (40x lens). Perform microwave antigen retrieval with 10 mM PBS buffer pH 7.2 before commencing with immunohistochemistry staining protocol.



Immunohistochemistry analysis of TIMM8B in paraffin-embedded rat brain using TIMM8B Rabbit polyclonal antibody (STJ118259) at dilution of 1:100 (40x lens). Perform microwave antigen retrieval with 10 mM PBS buffer pH 7.2 before commencing with immunohistochemistry staining protocol.



Western blot analysis of various lysates using TIMM8B Rabbit polyclonal antibody (STJ118259) at 1:1000 dilution. Secondary antibody: HRP Goat Anti-Rabbit IgG (H+L) (STJS000856) at 1:10000 dilution. Lysates/proteins: 25 µg per lane. Blocking buffer: 3% nonfat dry milk in TBST. Detection: ECL Basic Kit. Exposure time: 90s.