

Anti-SF3B1 antibody (1-144) (STJ118246)

GENERAL INFORMATION

Product Type	Primary antibodies
Applications	WB/IF/ICC/ELISA
Host / Source	Rabbit
Reactivity	Human/Mouse/Rat

PRODUCT PROPERTIES

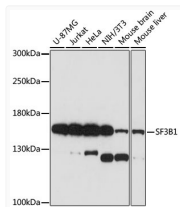
Clonality	Polyclonal
Concentration	Lot specific
Conjugation	Unconjugated
Purification	Affinity purification
Dilution Range	WB:1:500-1:2000 IF/CC:1:50-1:200 ELISA:Recommended starting concentration is 1 Mu g/mL. Please optimize the concentration based on your specific assay requirements.
Formulation	PBS with 0.01% Thimerosal, 50% Glycerol, pH 7.3.
Isotype	IgG
Molecular Weight	Protein Mw: 146kDa Observed Mw: 150kDa
Storage Instruction	Store at -20°C for up to 1 year from the date of receipt, and avoid repeat freeze-thaw cycles.

TARGET INFORMATION

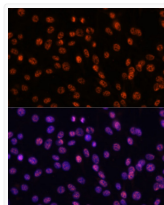
Gene ID	23451
Gene Symbol	SF3B1
UniProt ID	SF3B1_HUMAN
Immunogen Region	1-144
Immunogen Sequence	MAKIAKTHEDIEAQIREIQG KKAALDEAQQVGLDSTGYDD QEIYGGSDSRFAGYVTSIAA TELEDDDDYSSSTSLGQK KPGYHAPVALLNDIPQSTEQ YDPFAEHRPPKIADREDEYK KRRRTMIISPERLDPFADGF YSAA
Specificity	Recombinant fusion protein containing a sequence corresponding to amino acids 1-144 of human SF3B1 (NP_001005526.1).

ADDITIONAL INFORMATION

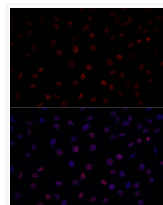
Note **STRICTLY FOR FURTHER SCIENTIFIC RESEARCH USE ONLY (RUO). MUST NOT TO BE USED IN DIAGNOSTIC OR THERAPEUTIC APPLICATIONS.**



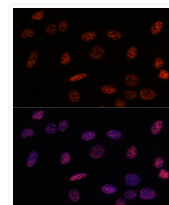
Western blot analysis of extracts of various cell lines, using SF3B1 antibody (STJ118246) at 1:1000 dilution. Secondary antibody: HRP Goat Anti-rabbit IgG (H+L) (STJS000856) at 1:10000 dilution. Lysates/proteins: 25 Mu g per lane. Blocking buffer: 3% non-fat dry milk in TBST. Detection: ECL Basic Kit. Exposure time: 90s.



Immunofluorescence analysis of C6 using SF3B1 antibody (STJ118246) at dilution of d100 (40x lens). Blue: DAPI for nuclear staining.



Immunofluorescence analysis of L929 using SF3B1 antibody (STJ118246) at dilution of d100 (40x lens). Blue: DAPI for nuclear staining.



Immunofluorescence analysis of U-2OS using SF3B1 antibody (STJ118246) at dilution of d100 (40x lens). Blue: DAPI for nuclear staining.