

## Anti-DICER1 antibody (1100-1200) (STJ118244)

### GENERAL INFORMATION

|               |                    |
|---------------|--------------------|
| Product Type  | Primary antibodies |
| Applications  | WB/IF/ICC/ELISA    |
| Host / Source | Rabbit             |
| Reactivity    | Human              |

### PRODUCT PROPERTIES

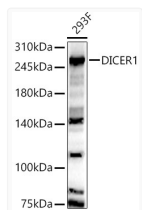
|                     |  |
|---------------------|--|
| Clonality           | Polyclonal   |
| Concentration       | Lot specific   |
| Conjugation         | Unconjugated   |
| Purification        | Affinity purification  |
| Dilution Range      | WB:1:500-1:1000<br>IF/CC:1:50-1:200<br>ELISA:Recommended starting concentration is 1 Mu g/mL. Please optimize the concentration based on your specific assay requirements. |
| Formulation         | PBS with 0.05% Proclin300, 50% Glycerol, pH 7.3.   |
| Isotype             | IgG  |
| Molecular Weight    | Protein Mw: 219kDa<br>Observed Mw: 250kDaa   |
| Storage Instruction | Store at -20°C for up to 1 year from the date of receipt, and avoid repeat freeze-thaw cycles.   |

### TARGET INFORMATION

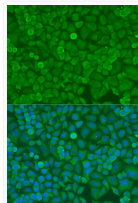
|                    |  |
|--------------------|--|
| Gene ID            | <a href="#">23405</a>  |
| Gene Symbol        | <a href="#">DICER1</a>   |
| UniProt ID         | <a href="#">DICER_HUMAN</a>  |
| Immunogen Region   | 1100-1200  |
| Immunogen Sequence | KSIDSKSFISISNSSAEND NYCKHSTIVPENAAHQGANR TSSLENHDQMSVNCRTLLSE<br>SPGKLHVEVSADLTAINGLS YQNLANGSYDLANRDFCQG N    |
| Specificity        | A synthetic peptide corresponding to a sequence within amino acids 1100-1200 of human DICER1 (NP_001258211.1). |

### ADDITIONAL INFORMATION

Note STRICTLY FOR FURTHER SCIENTIFIC RESEARCH USE ONLY (RUO). MUST NOT TO BE USED IN DIAGNOSTIC OR THERAPEUTIC APPLICATIONS.



Western blot analysis of 293F, using DICER1 antibody (STJ118244) at 1:900 dilution. Secondary antibody: HRP Goat Anti-rabbit IgG (H+L) (STJS000856) at 1:10000 dilution. Lysates/proteins: 25 Mu g per lane. Blocking buffer: 3% non-fat dry milk in TBST. Detection: ECL Basic Kit. Exposure time: 180s.



Immunofluorescence analysis of U2OS cells using DICER1 antibody (STJ118244) at dilution of 1:100. Blue: DAPI for nuclear staining.