

Anti-NBEAL2 antibody (1800-2100) (STJ118242)

GENERAL INFORMATION

Product Type	Primary antibodies
Applications	WB/ELISA
Host / Source	Rabbit
Reactivity	Human

PRODUCT PROPERTIES

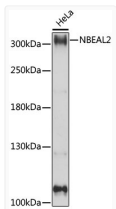
Clonality	Polyclonal
Concentration	Lot specific
Conjugation	Unconjugated
Purification	Affinity purification
Dilution Range	WB:1:500-1:2000 ELISA:Recommended starting concentration is 1 μ g/mL. Please optimize the concentration based on your specific assay requirements.
Formulation	PBS with 0.01% Thimerosal, 50% Glycerol, pH 7.3.
Isotype	IgG
Molecular Weight	Protein Mw: 303kDa Observed Mw: 302kDa
Storage Instruction	Store at -20°C for up to 1 year from the date of receipt, and avoid repeat freeze-thaw cycles.

TARGET INFORMATION

Gene ID	23218
Gene Symbol	NBEAL2
UniProt ID	NBEAL2_HUMAN
Immunogen Region	1800-2100
Immunogen Sequence	LLHWGALWRQLASPCGAWAL RDTPIPRWKLSAETYSRMR LKLVPNHHFDPHLEASALRD NLGEVPLTPTEEASLPLAVT KEAKVSTPPELLQEDQLGED ELAELETPMEEAELDEQREK LVLSAECQLVTVVAVVPGLL EVTTQNVYFYDGGSTERVETE EGIGYDFRRPLAQLREVHLR RFNLRRSALELFFIDQANYF LNFPCVKVGTTPVSSPSQTPR PQPGPIPPHTQVRNQVYSW
Specificity	Recombinant fusion protein containing a sequence corresponding to amino acids 1800-2100 of human NBEAL2 (NP_055990.1).

ADDITIONAL INFORMATION

Note **STRICTLY FOR FURTHER SCIENTIFIC RESEARCH USE ONLY (RUO). MUST NOT TO BE USED IN DIAGNOSTIC OR THERAPEUTIC APPLICATIONS.**



Western blot analysis of lysates from HeLa cells, using NBEAL2 Rabbit polyclonal antibody (STJ118242) at 1:1000 dilution. Secondary antibody: HRP Goat Anti-Rabbit IgG (H+L) (STJS00856) at 1:10000 dilution. Lysates/proteins: 25 μ g per lane. Blocking buffer: 3% nonfat dry milk in TBST. Detection: ECL Basic Kit. Exposure time: 5s.