

## Anti-ACAA2 antibody (1-250) (STJ118223)

### GENERAL INFORMATION

Product Type	Primary antibodies
Applications	WB/IHC-P/IF/ICC/ELISA
Host / Source	Rabbit
Reactivity	Human/Mouse/Rat

### PRODUCT PROPERTIES

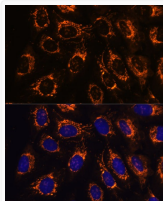
Clonality	Polyclonal
Concentration	Lot specific
Conjugation	Unconjugated
Purification	Affinity purification
Dilution Range	WB:1:500-1:2000 IHC-P:1:50-1:200 IF/ICC:1:50-1:200 ELISA:Recommended starting concentration is 1 Mu g/mL. Please optimize the concentration based on your specific assay requirements.
Formulation	PBS with 0.05% Proclin300, 50% Glycerol, pH 7.3.
Isotype	IgG
Molecular Weight	Protein Mw: 42kDa Observed Mw: 42kDa
Storage Instruction	Store at -20°C for up to 1 year from the date of receipt, and avoid repeat freeze-thaw cycles.

### TARGET INFORMATION

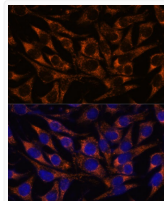
Gene ID	<a href="#">10449</a>
Gene Symbol	<a href="#">ACAA2</a>
UniProt ID	<a href="#">THIM_HUMAN</a>
Immunogen Region	1-250
Immunogen Sequence	MALLRGVVFVAAKRTPFAY GGLLKDFATDLSEFAAKAA LSAGKVSPETVDSVIMGNVL QSSSDAIYLARHVGLRVGIP KETPALTINRLCGSGFQSVI NGCQEICVKEAEVVLGGTE SMSQAPYCVRNVRFGTKLGS DIKLEDSLWVSLTDQHVQLP MAMTAENLAVKHKISREECD KYALQSQQRWKAANDAGYFN DEMAPIEVKTKKGGKQTMQVD EHARPQTTLQLKLPVVF
Specificity	Recombinant fusion protein containing a sequence corresponding to amino acids 1-250 of human ACAA2 (NP_006102.2).

### ADDITIONAL INFORMATION

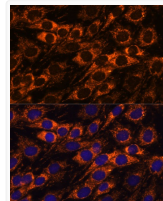
Note **STRICTLY FOR FURTHER SCIENTIFIC RESEARCH USE ONLY (RUO). MUST NOT TO BE USED IN DIAGNOSTIC OR THERAPEUTIC APPLICATIONS.**



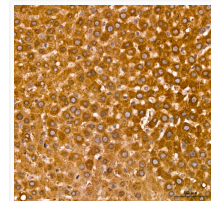
Immunofluorescence analysis of U-2 OS cells using ACAA2 Rabbit polyclonal antibody (STJ118223) at dilution of 1:100. Secondary antibody: Cy3 Goat Anti-Rabbit IgG (H+L) at 1:500 dilution. Blue: DAPI for nuclear staining.



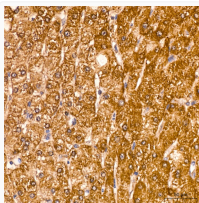
Immunofluorescence analysis of L929 cells using ACAA2 Rabbit polyclonal antibody (STJ118223) at dilution of 1:100. Secondary antibody: Cy3 Goat Anti-Rabbit IgG (H+L) at 1:500 dilution. Blue: DAPI for nuclear staining.



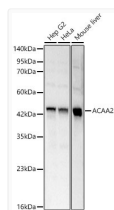
Immunofluorescence analysis of C6 cells using ACAA2 Rabbit polyclonal antibody (STJ118223) at dilution of 1:100. Secondary antibody: Cy3 Goat Anti-Rabbit IgG (H+L) at 1:500 dilution. Blue: DAPI for nuclear staining.



Immunohistochemistry analysis of ACAA2 in paraffin-embedded rat liver tissue using ACAA2 Rabbit polyclonal antibody (STJ118223) at a dilution of 1:100 (40x lens). High pressure antigen retrieval was performed with 0.01 M citrate buffer (pH 6.0) prior to immunohistochemistry staining.



Immunohistochemistry analysis of ACAA2 in paraffin-embedded human liver tissue using ACAA2 Rabbit polyclonal antibody (STJ118223) at a dilution of 1:100 (40x lens). High pressure antigen retrieval was performed with 0.01 M citrate buffer (pH 6.0) prior to immunohistochemistry staining.



Western blot analysis of various lysates using ACAA2 Rabbit polyclonal antibody (STJ118223) at 1:1000 dilution. Secondary antibody: HRP Goat Anti-Rabbit IgG (H+L) (STJS000856) at 1:10000 dilution. Lysates/ proteins: 25 Mu g per lane. Blocking buffer: 3 % nonfat dry milk in TBST. Detection: ECL Basic Kit. Exposure time: 0.8s.