

Anti-CD2BP2 antibody (1-341) (STJ118222)

GENERAL INFORMATION

Product Type	Primary antibodies
Applications	WB/ELISA
Host / Source	Rabbit
Reactivity	Human

PRODUCT PROPERTIES

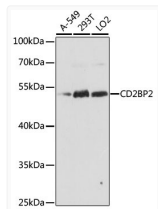
Clonality	Polyclonal
Concentration	Lot specific
Conjugation	Unconjugated
Purification	Affinity purification
Dilution Range	WB:1:500-1:2000 ELISA:Recommended starting concentration is 1 Mu g/mL. Please optimize the concentration based on your specific assay requirements.
Formulation	PBS with 0.01% Thimerosal, 50% Glycerol, pH 7.3.
Isotype	IgG
Molecular Weight	Protein Mw: 38kDa Observed Mw: 54kDa
Storage Instruction	Store at -20°C for up to 1 year from the date of receipt, and avoid repeat freeze-thaw cycles.

TARGET INFORMATION

Gene ID	10421
Gene Symbol	CD2BP2
UniProt ID	CD2B2_HUMAN
Immunogen Region	1-341
Immunogen Sequence	MPKRKVTFGVGVGDEEDEDEI IVPKPKLVDPVAGSGGPGSR FKGKHSLSDSDEEEDDDGGGSKYDILASEDVEGQEAATLP SEGGVRITPFNLQEEMEEGH FDADGNYFLNRDAQIRDSWL DNIDWVKIRERPPGQRQASD SEEDSLGQTSMSAQALLEG LLELLLPRETVAGALRRLGARGGGKGRKGPQPSSPQRLD RLSGLADQMVARGNLGVYQE TRERLAMRLKGLGCQTLGP
Specificity	Recombinant fusion protein containing a sequence corresponding to amino acids 1-341 of human CD2BP2 (NP_006101.1).

ADDITIONAL INFORMATION

Note STRICTLY FOR FURTHER SCIENTIFIC RESEARCH USE ONLY (RUO). MUST NOT TO BE USED IN DIAGNOSTIC OR THERAPEUTIC APPLICATIONS.



Western blot analysis of various lysates using CD2BP2 Rabbit polyclonal antibody (STJ118222) at 1:1000 dilution. Secondary antibody: HRP Goat Anti-Rabbit IgG (H+L) (STJS000856) at 1:10000 dilution. Lysates/proteins: 25 Mu g per lane. Blocking buffer: 3% nonfat dry milk in TBST. Detection: ECL Basic Kit. Exposure time: 60s.