

## Anti-SGPL1 antibody (60-390) (STJ118190)

### GENERAL INFORMATION

Product Type	Primary antibodies
Applications	WB/IF/ICC/ELISA
Host / Source	Rabbit
Reactivity	Human/Mouse/Rat

### PRODUCT PROPERTIES

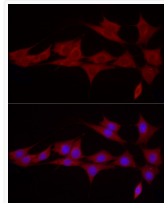
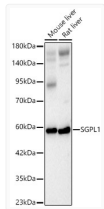
Clonality	Polyclonal
Concentration	Lot specific
Conjugation	Unconjugated
Purification	Affinity purification
Dilution Range	WB:1:500-1:2000 IF/CC:1:50-1:200 ELISA:Recommended starting concentration is 1 $\mu$ g/mL. Please optimize the concentration based on your specific assay requirements.
Formulation	PBS with 0.09% Sodium Azide, 50% Glycerol, pH7.3.
Isotype	IgG
Molecular Weight	Protein Mw: 64kDa Observed Mw: 60kDa
Storage Instruction	Store at -20°C for up to 1 year from the date of receipt, and avoid repeat freeze-thaw cycles.

### TARGET INFORMATION

Gene ID	<a href="#">8879</a>
Gene Symbol	<a href="#">SGPL1</a>
UniProt ID	<a href="#">SGPL1_HUMAN</a>
Immunogen Region	60-390
Immunogen Sequence	VFQPESLWSRFKKKCFKLTR KMPHIGRKIQDKLNKTKDDI SKNMSFLKVDKEYVKALPSQ GLSSSAVLEKLEKEYSSMDAF WQEGRASGTVYSGEEKLTELVKAYGDFAWSNPLHPDIFP GLRKIEAIVRIACSLFNNG PDSCGCVTSGGTESILMACK AYRDLAFEKGIKTPEIVAPQ SAHAAFNKAASYFGMKIVRV PLTKMMEVDVRAMRRAISRN TAMLVCSTPQFFPHGVDPV
Specificity	Recombinant fusion protein containing a sequence corresponding to amino acids 60-390 of human SGPL1 (NP_003892.2).

### ADDITIONAL INFORMATION

Note STRICTLY FOR FURTHER SCIENTIFIC RESEARCH USE ONLY (RUO). MUST NOT TO BE USED IN DIAGNOSTIC OR THERAPEUTIC APPLICATIONS.



Western blot analysis of various lysates, using SGPL1 rabbit polyclonal antibody (STJ118190) at 1:500 dilution. Secondary antibody: HRP Goat Anti-rabbit IgG (H+L) (STJS000856) at 1:10000 dilution. Lysates/proteins: 25ug per lane. Blocking buffer: 3% non-fat dry milk in TBST. Detection: ECL Basic Kit. Exposure time: 60s.

Immunofluorescence analysis of NIH/3T3 cells using SGPL1 rabbit polyclonal antibody (STJ118190) at dilution of 1:50 (40x lens). Blue: DAPI for nuclear staining.