

Anti-SERPINI1 antibody (181-410) (STJ118149)

GENERAL INFORMATION

Product Type	Primary antibodies
Applications	WB/IHC-P/ELISA
Host / Source	Rabbit
Reactivity	Mouse/Rat

PRODUCT PROPERTIES

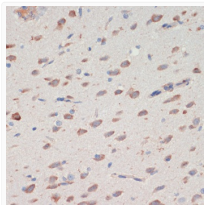
Clonality	Polyclonal
Concentration	Lot specific
Conjugation	Unconjugated
Purification	Affinity purification
Dilution Range	WB:1:500-1:2000 IHC-P:1:50-1:100 ELISA:Recommended starting concentration is 1 µg/mL. Please optimize the concentration based on your specific assay requirements.
Formulation	PBS with 0.01% Thimerosal, 50% Glycerol, pH 7.3.
Isotype	IgG
Molecular Weight	Protein Mw: 46kDa Observed Mw: 46kDa
Storage Instruction	Store at -20°C for up to 1 year from the date of receipt, and avoid repeat freeze-thaw cycles.

TARGET INFORMATION

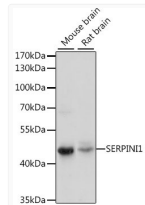
Gene ID	5274
Gene Symbol	SERPINI1
UniProt ID	NEUS_HUMAN
Immunogen Region	181-410
Immunogen Sequence	INAVYFKGNWKSQFRPENTR TFSFTKDDSEVQIPMMYQQ GEFYYGEFSDGSNEAGGIYQ VLEIPEYEGDEISMMMLVLSRQ EVPLATLEPLVKAQLVEEWA NSVKKQKVEVYLPFRFTVEQE IDLKDVLLKALGITEIFIKDA NLTGLSDNKEIFLSKAIHKS FLEVNEEGSEAAAVSGMIAI SRMAVLYPQVVDHPFFFLI RNRRTGTILFMGRVMHPETM NTSGHDFEEL
Specificity	Recombinant fusion protein containing a sequence corresponding to amino acids 181-410 of human SERPINI1 (NP_005016.1).

ADDITIONAL INFORMATION

Note **STRICTLY FOR FURTHER SCIENTIFIC RESEARCH USE ONLY (RUO). MUST NOT TO BE USED IN DIAGNOSTIC OR THERAPEUTIC APPLICATIONS.**



Immunohistochemistry analysis of SERPINI1 in paraffin-embedded rat brain using SERPINI1 Rabbit polyclonal antibody (STJ118149) at dilution of 1:200 (40x lens). Perform microwave antigen retrieval with 10 mM PBS buffer pH 7.2 before commencing with immunohistochemistry staining protocol.



Western blot analysis of various lysates using SERPINI1 Rabbit polyclonal antibody (STJ118149) at 1:1000 dilution. Secondary antibody: HRP Goat Anti-Rabbit IgG (H+L) (STJS000856) at 1:10000 dilution. Lysates/proteins: 25 µg per lane. Blocking buffer: 3% nonfat dry milk in TBST. Detection: ECL Enhanced Kit. Exposure time: 90s.