

Anti-KCNS2 antibody (1-187) (STJ118130)

GENERAL INFORMATION

Product Type	Primary antibodies
Applications	WB/IF/ICC/ELISA
Host / Source	Rabbit
Reactivity	Human/Mouse/Rat

PRODUCT PROPERTIES

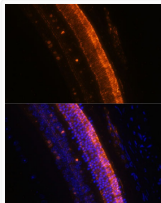
Clonality	Polyclonal
Concentration	Lot specific
Conjugation	Unconjugated
Purification	Affinity purification
Dilution Range	WB:1:500-1:2000 IF/CC:1:50-1:100 ELISA:Recommended starting concentration is 1 μ g/mL. Please optimize the concentration based on your specific assay requirements.
Formulation	PBS with 0.01% Thimerosal, 50% Glycerol, pH 7.3.
Isotype	IgG
Molecular Weight	Protein Mw: 54kDa Observed Mw: 54kDa
Storage Instruction	Store at -20°C for up to 1 year from the date of receipt, and avoid repeat freeze-thaw cycles.

TARGET INFORMATION

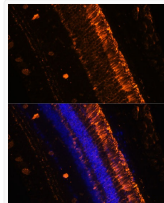
Gene ID	3788
Gene Symbol	KCNS2
UniProt ID	KCNS2_HUMAN
Immunogen Region	1-187
Immunogen Sequence	MTGQSLWDVSEANVEDGEIR INVGGFKRRLRSHTLLRFPE TRLGRLLLSCHSREAILLCD DYDDVQREFYFDRNPELFPY VLHFYHTGKLVHMAELCVFS FSQEIEYWGINEFFIDSCCS YSYHGRKVEPEQEKWDEQSD QESTTSSFDEILAFYNDASK FDGQPLGNFRRQLWLALDNP GYSVLSR
Specificity	Recombinant fusion protein containing a sequence corresponding to amino acids 1-187 of human KCNS2 (NP_065748.1).

ADDITIONAL INFORMATION

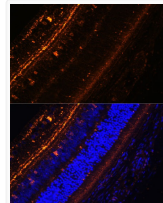
Note **STRICTLY FOR FURTHER SCIENTIFIC RESEARCH USE ONLY (RUO). MUST NOT TO BE USED IN DIAGNOSTIC OR THERAPEUTIC APPLICATIONS.**



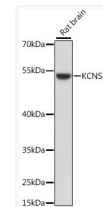
Immunofluorescence analysis of paraffin-embedded mouse eye using KCNS2 Rabbit polyclonal antibody (STJ118130) at dilution of 1:100 (40x lens). Secondary antibody: Cy3 Goat Anti-Rabbit IgG (H+L) at 1:500 dilution. Blue: DAPI for nuclear staining.



Immunofluorescence analysis of paraffin-embedded mouse eye using KCNS2 Rabbit polyclonal antibody (STJ118130) at dilution of 1:100 (20x lens). Secondary antibody: Cy3 Goat Anti-Rabbit IgG (H+L) at 1:500 dilution. Blue: DAPI for nuclear staining.



Immunofluorescence analysis of paraffin-embedded rat eye using KCNS2 Rabbit polyclonal antibody (STJ118130) at dilution of 1:100 (40x lens). Secondary antibody: Cy3 Goat Anti-Rabbit IgG (H+L) at 1:500 dilution. Blue: DAPI for nuclear staining.



Western blot analysis of lysates from rat brain, using KCNS2 Rabbit polyclonal antibody (STJ118130) at 1:1000 dilution. Secondary antibody: HRP Goat Anti-Rabbit IgG (H+L) (STJS000856) at 1:10000 dilution. Lysates/proteins: 25 μ g per lane. Blocking buffer: 3% nonfat dry milk in TBST. Detection: ECL Basic Kit. Exposure time: 90s.