

## Anti-CDC42 antibody (1-186) (STJ118103)

### GENERAL INFORMATION

Product Type	Primary antibodies
Applications	IF/ICC/ELISA
Host / Source	Rabbit
Reactivity	Human

### PRODUCT PROPERTIES

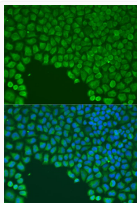
Clonality	Polyclonal
Concentration	Lot specific
Conjugation	Unconjugated
Purification	Affinity purification
Dilution Range	IF/ICC:1:50-1:200 ELISA:Recommended starting concentration is 1 µg/mL. Please optimize the concentration based on your specific assay requirements.
Formulation	PBS with 0.02% Sodium Azide, 50% Glycerol, pH 7.3.
Isotype	IgG
Molecular Weight	Protein Mw: 21kDa Observed Mw:
Storage Instruction	Store at -20°C for up to 1 year from the date of receipt, and avoid repeat freeze-thaw cycles.

### TARGET INFORMATION

Gene ID	<a href="#">998</a>
Gene Symbol	<a href="#">CDC42</a>
UniProt ID	<a href="#">CDC42_HUMAN</a>
Immunogen Region	1-186
Immunogen Sequence	MQTIKCVVVGDGAVGKTCLL ISYTTNKFPSEYVPTVFDNY AVTVMIGGEPYTLGLFDTAG QEDYDLRPLSYPQTDVFLV CFSVSPSSFENVKEKWWPE ITHHCPKTPFLVGTQIDLR DDPSTIEKLAKNKQKIPITPE TAEKLARDLKAVKYVECSAL TQKGLKNVFDEAILAALEPP EPKKS
Specificity	Recombinant fusion protein containing a sequence corresponding to amino acids 1-186 of human CDC42 (NP_001782.1).

### ADDITIONAL INFORMATION

Note STRICTLY FOR FURTHER SCIENTIFIC RESEARCH USE ONLY (RUO). MUST NOT TO BE USED IN DIAGNOSTIC OR THERAPEUTIC APPLICATIONS.



Immunofluorescence analysis of U2OS cells using CDC42 antibody (STJ118103) at dilution of 1:100. Blue: DAPI for nuclear staining.