

## Anti-CDC20 antibody (1-100) (STJ118102)

### GENERAL INFORMATION

Product Type	Primary antibodies
Applications	WB/IHC-P/IF/ICC/IP/ELISA
Host / Source	Rabbit
Reactivity	Human/Mouse/Rat

### PRODUCT PROPERTIES

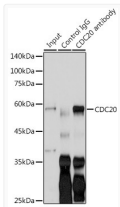
Clonality	Polyclonal
Concentration	Lot specific
Conjugation	Unconjugated
Purification	Affinity purification
Dilution Range	WB:1:500-1:1000 IHC-P:1:50-1:100 IF/CC:1:50-1:100 IP:0.5 Mu g-4 Mu g antibody for 200 Mu g-400 Mu g extracts of whole cells ELISA:Recommended starting concentration is 1 Mu g/mL. Please optimize the concentration based on your specif
Formulation	PBS with 0.01% Thimerosal, 50% Glycerol, pH 7.3.
Isotype	IgG
Molecular Weight	Protein Mw: 55kDa Observed Mw: 55kDa
Storage Instruction	Store at-20°C for up to 1 year from the date of receipt, and avoid repeat freeze-thaw cycles.

### TARGET INFORMATION

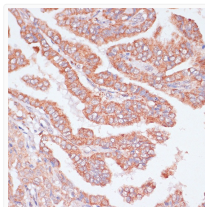
Gene ID	<a href="#">991</a>
Gene Symbol	<a href="#">CDC20</a>
UniProt ID	<a href="#">CDC20_HUMAN</a>
Immunogen Region	1-100
Immunogen Sequence	MAQFAFESDLHSLQLDPAI PNAPPARWQRKAKEAAGPAP SPMRAANRSHSAGRTPGRTP GKSSSKVQTTSPKPGGDYI PHRSAAQMEVASFLLSKENQ
Specificity	Recombinant fusion protein containing a sequence corresponding to amino acids 1-100 of human CDC20 (NP_001246.2?).

### ADDITIONAL INFORMATION

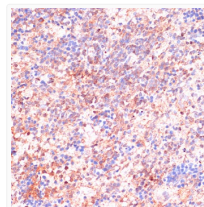
Note **STRICTLY FOR FURTHER SCIENTIFIC RESEARCH USE ONLY (RUO). MUST NOT TO BE USED IN DIAGNOSTIC OR THERAPEUTIC APPLICATIONS.**



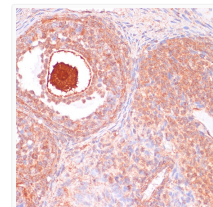
Immunoprecipitation analysis of 200 Mu g extracts of LO2 cells using 3 Mu g CDC20 antibody (STJ118102). Western blot was performed from the immunoprecipitate using CDC20 antibody (STJ118102) at a dilution of 1:1000.



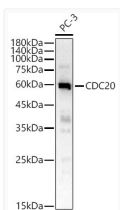
Immunohistochemistry analysis of CDC20 in paraffin-embedded Human thyroid cancer using CDC20 Rabbit polyclonal antibody (STJ118102) at dilution of 1:100 (40x lens). Perform microwave antigen retrieval with 10 mM PBS buffer pH 7. 2 before commencing with immunohistochemistry staining protocol.



Immunohistochemistry analysis of CDC20 in paraffin-embedded Rat spleen using CDC20 Rabbit polyclonal antibody (STJ118102) at dilution of 1:100 (40x lens). Perform microwave antigen retrieval with 10 mM PBS buffer pH 7. 2 before commencing with immunohistochemistry staining protocol.



Immunohistochemistry analysis of CDC20 in paraffin-embedded Rat ovary using CDC20 Rabbit polyclonal antibody (STJ118102) at dilution of 1:100 (40x lens). Perform microwave antigen retrieval with 10 mM PBS buffer pH 7. 2 before commencing with immunohistochemistry staining protocol.



Western blot analysis of lysates from PC-3 cells, using CDC20 Rabbit polyclonal antibody (STJ118102) at 1:1000 dilution. Secondary antibody: HRP Goat Anti-Rabbit IgG (H+L) (STJS000856) at 1:10000 dilution. Lysates/proteins: 25 Mu g per lane. Blocking buffer: 3% nonfat dry milk in TBST. Detection: ECL Basic Kit. Exposure time: 90s.