

Anti-CD27 antibody (20-191) (STJ118100)

GENERAL INFORMATION

Product Type	Primary antibodies
Applications	WB/ELISA
Host / Source	Rabbit
Reactivity	Mouse

PRODUCT PROPERTIES

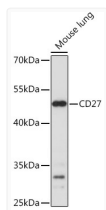
Clonality	Polyclonal
Concentration	Lot specific
Conjugation	Unconjugated
Purification	Affinity purification
Dilution Range	WB:1:500-1:2000 ELISA:Recommended starting concentration is 1 Mu g/mL. Please optimize the concentration based on your specific assay requirements.
Formulation	PBS with 0.01% Thimerosal, 50% Glycerol, pH 7.3.
Isotype	IgG
Molecular Weight	Protein Mw: 29kDa Observed Mw: 50kDa
Storage Instruction	Store at -20°C for up to 1 year from the date of receipt, and avoid repeat freeze-thaw cycles.

TARGET INFORMATION

Gene ID	939
Gene Symbol	CD27
UniProt ID	CD27_HUMAN
Immunogen Region	20-191
Immunogen Sequence	ATPAPKSCPERHYWAQGKLC QMCEPGTFLVKDCDQHRKA AQCDPCIPGVSFSPDHHTRP HCESCRHCSGGLVVRNCTIT ANAECACRNGWQCRDKECTE CDPLPNPSLTARSSQALSPH PQPTHLPYVSEMLEARAGH MQTLADFRQLPARTLSTHWP PQRSLCSSDFIR
Specificity	Recombinant fusion protein containing a sequence corresponding to amino acids 20-191 of human CD27 (NP_001233.1).

ADDITIONAL INFORMATION

Note STRICTLY FOR FURTHER SCIENTIFIC RESEARCH USE ONLY (RUO). MUST NOT TO BE USED IN DIAGNOSTIC OR THERAPEUTIC APPLICATIONS.



Western blot analysis of lysates from Mouse lung, using CD27 Rabbit polyclonal antibody (STJ118100) at 1:1000 dilution. Secondary antibody: HRP Goat Anti-Rabbit IgG (H+L) (STJS000856) at 1:10000 dilution. Lysates/proteins: 25 Mu g per lane. Blocking buffer: 3% nonfat dry milk in TBST. Detection: ECL Basic Kit. Exposure time: 30s.