

Anti-TSPO antibody (1-50) (STJ118095)

GENERAL INFORMATION

Product Type	Primary antibodies
Applications	WB/IF/ICC/ELISA
Host / Source	Rabbit
Reactivity	Mouse

PRODUCT PROPERTIES

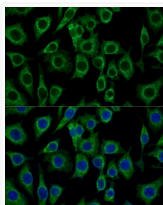
Clonality	Polyclonal
Concentration	Lot specific
Conjugation	Unconjugated
Purification	Affinity purification
Dilution Range	WB:1:500-1:1000 IF/CC:1:50-1:100 ELISA:Recommended starting concentration is 1 Mu g/mL. Please optimize the concentration based on your specific assay requirements.
Formulation	PBS with 0.05% Proclin300, 50% Glycerol, pH 7.3.
Isotype	IgG
Molecular Weight	Protein Mw: 19kDa Observed Mw: 19kDa
Storage Instruction	Store at -20°C for up to 1 year from the date of receipt, and avoid repeat freeze-thaw cycles.

TARGET INFORMATION

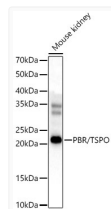
Gene ID	706
Gene Symbol	TSPO
UniProt ID	TSPO_HUMAN
Immunogen Region	1-50
Immunogen Sequence	MAPPWVPAMGFTLAPSLGCF VGSRFVHGEGLRWYAGLQKP SWHPPHWVLG
Specificity	Recombinant fusion protein containing a sequence corresponding to amino acids 1-50 of human PBR/PBR/TSPO (NP_000705.2).

ADDITIONAL INFORMATION

Note **STRICTLY FOR FURTHER SCIENTIFIC RESEARCH USE ONLY (RUO). MUST NOT TO BE USED IN DIAGNOSTIC OR THERAPEUTIC APPLICATIONS.**



Immunofluorescence analysis of L929 cells using PBR/PBR/TSPO Polyclonal Antibody (STJ118095) at dilution of 1:100 (40x lens). Blue: DAPI for nuclear staining.



Western blot analysis of various lysates, using PBR/TSPO Rabbit polyclonal antibody (STJ118095) at 1:1000 dilution. Secondary antibody: HRP Goat Anti-Rabbit IgG (H+L) (STJS000856) at 1:10000 dilution. Lysates/proteins: 25 Mu g per lane. Blocking buffer: 3% nonfat dry milk in TBST. Detection: ECL Basic Kit. Exposure time: 60s.